

The images below formed the illustrative part of the titled presentation given to the group.

The comments which accompany, suggest a theme which an image prompted.

**YET MORE  
HISTORIC PHOTOGRAPHS  
OF THE  
RAME PENINSULA  
AND.....**

Something not quite right???



**OUR JOURNEY  
BEGINS.....**





HOOKERS ON THE BEACH C1900

(RAME HERITAGE)



TWO CAWSAND HOOKERS ON THE BEACH (RAME HERITAGE)

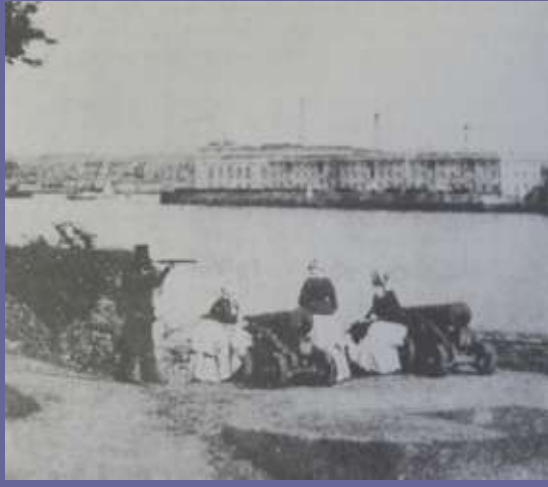
### FISH CATCHES IN CAWSAND DECEMBER 1889

• 1		17	6000
• 2	10000	18	
• 3	8000	19	9000
• 4		20	9000
• 5	700	21	8000
• 6		22	
• 7		23	
• 8		24	10000
• 9		25	
• 10	4000	26	400
• 11	8000	27	6000 (30000 @ MOTHERCOMBE)
• 12	6000	28	7000
• 13	2500	29	
• 14		30	3000
• 15			

— PRICES 1/3d TO 2/6d PER 100  
— NO FISH IN EASTERLY WINDS

**TOTAL CATCH**  
**96,600 FISH**

Henry Fox Talbot Sept 1845 The Blockhouse



1858

Breakwater 1842 or 1847

Numbers pass without BW?



A BAY VIEW FROM PENLEE WALK

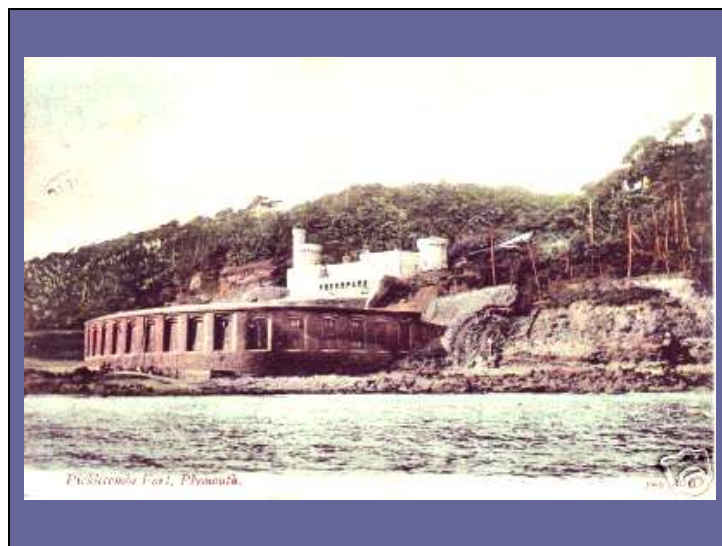
Boats on beach



Zooming in on beach



Washing out  
Boat masts leaning on wall



1905 Picklecombe Fort and Breakwater



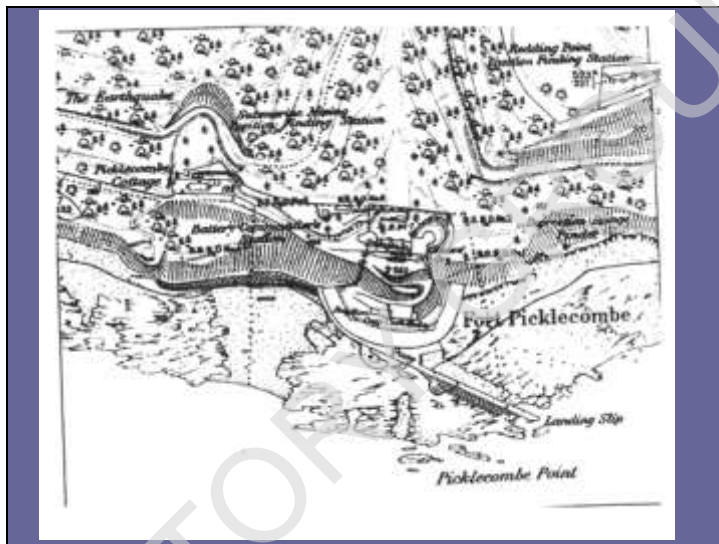
Warwick Castle



1904



2008



'The Earthquake'?

Submarine mining position finding station

Timeline: Events in and around Tywardreath

- 1886
- On January 23, an earthquake occurred in the West of England on Wednesday morning. At St. Blazey the inhabitants were so shaken in bed that they arose in fright. Buildings swayed to and fro and tottered. The shock took place at half past six, and lasted six seconds.

# MY STREET

THE STRAND

OR

THE BOUND ??????????????

Old census records call it the Strand??????????????????

## Census 1841 Books 9/10 Folio 8 Page 10/11

Cawsand Beach On Strand, **1, Elizth Glynn**, 30, Female Servant,

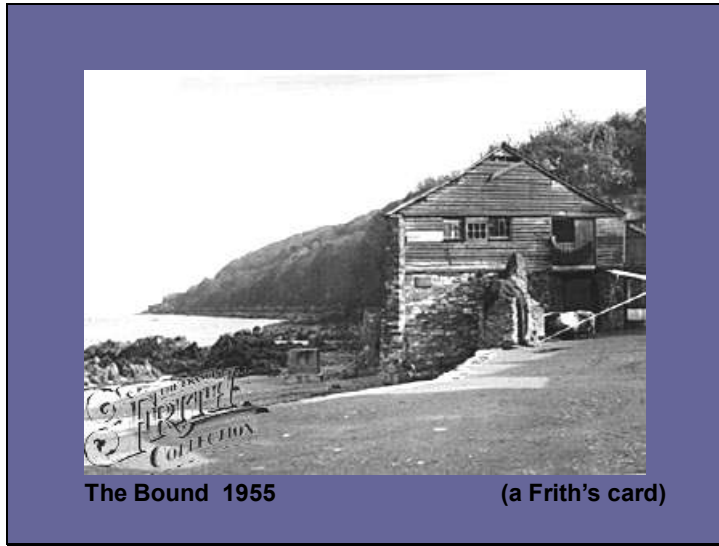
Cawsand Beach On Strand **1, John Glynn, 12**, In county,  
,, Elixth Glynn, 10, In county,  
,, Andrew Glynn, 7, In county,  
,, Richard Glynn, 2, In county,  
,, N.K. Glynn, 1d, In county,  
,, Elizabeth Nickels, 60, Female Servant,  
Cawsand Beach On Strand, **1, John Jenkin, 40**, Fisherman, In county,  
,, Mary Jenkin, 40, In county,  
,, Richd Jenkin, 15, In county,  
,, Mary Jenkin, 6, In county,  
,, John Jenkin, 4, In county,  
,, Charlotte Jenkin, 16m, In county,  
,, Elizth Richards, 15, In county,  
Cawsand Beach On Strand **1, Elizth Stephens**, 60, Independent,  
,, Charles Stephens, 25, Fisherman,  
,, Grace Moorman, 12, Female Servant,  
,, John Williams, 55, Fisherman,  
,, Elizabeth Williams, 55, In county,  
,, David Colthorpe, 9, In county,  
,, Elizth Baresh, 70, In county,  
,, James Beail, 40, Mason, In county,  
,, Jane Beail, 40, In county,

40 names are 'Fisherman' or 'mason'

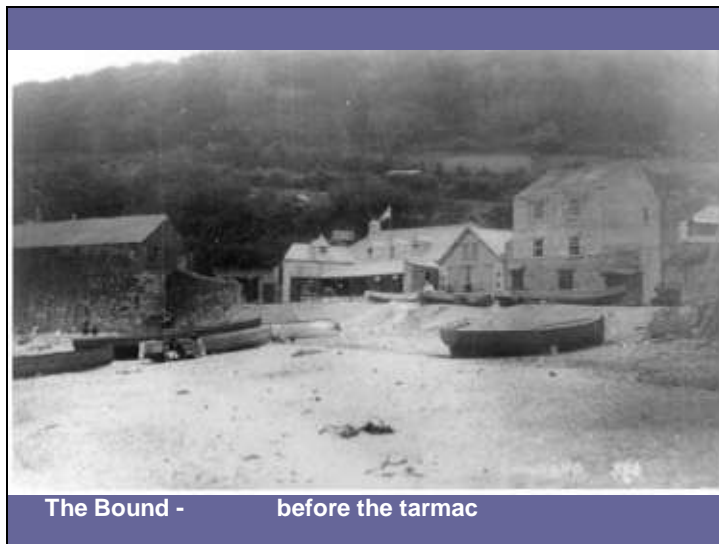
## 1841 Census continued.....

Cawsand Beach On Strand, **1, John Dunstone, 20**, In county,  
,, Mary Dunstone, 18, In county,  
,, William Fiott, 25, Tailor, Not in county,  
Cawsand Beach On Strand **1, John Bawdon, 65**, Farmer, In county,  
,, Susannah Bawdon, 70, In county,  
,, Joseph Bawdon, 30, Ag Lab, In county,  
,, Elizabeth Bawdon, 25, In county,  
Cawsand Beach On Strand **1, John Dyer, 55**, Fisherman, In county,  
,, Elizabeth Dyer, 50, Unknown,  
,, James Dyer, 16, In county,  
,, Richard Dyer, 13, In county,  
,, Peter Dyer, 10, In county,  
,, William Dyer, 7, In county,  
,, Elizabeth Dyer, 5, In county,  
Cawsand Beach On Strand **1, Richard Moorman, 50**, Fisherman,  
,, Grace Moorman, 50, In county,  
,, Sarah Moorman, 10, In county,  
,, Ann Moorman, 5, In county,

42 persons

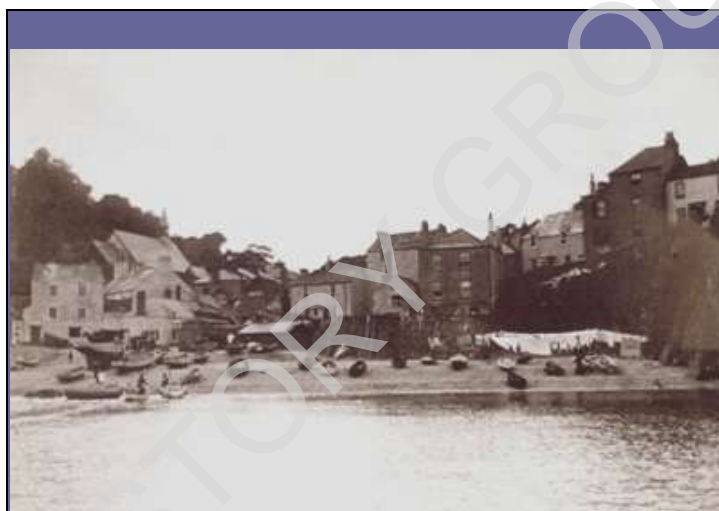


What went on in this building



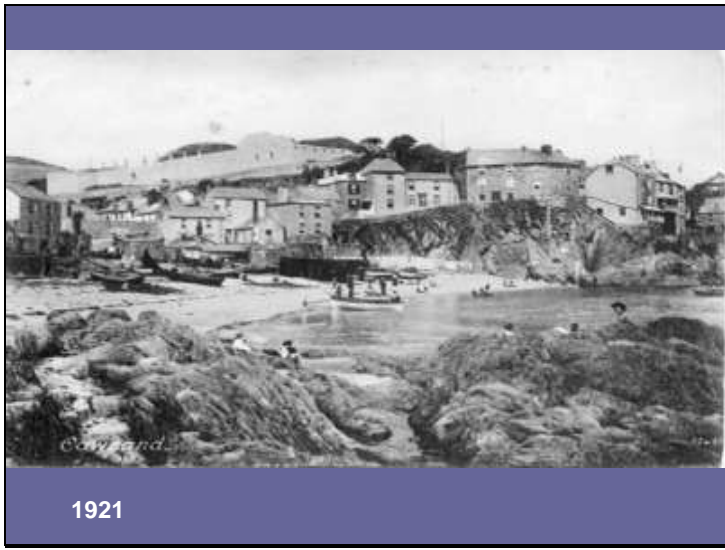


CAWSAND BEACH



WASHING DAY ON THE BEACH





1921

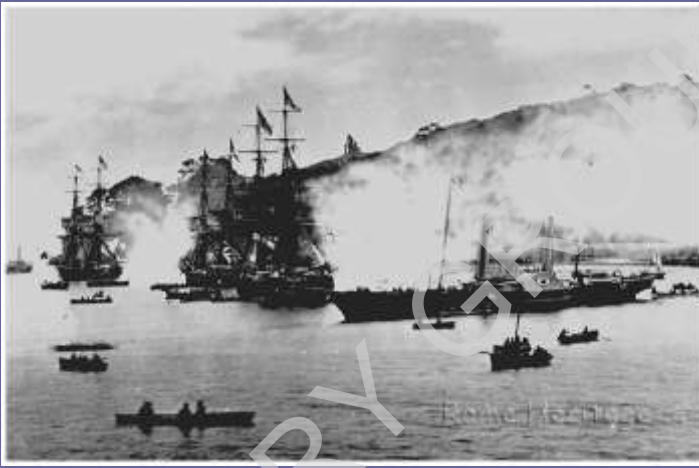


1987



# HISTORY REPEATS ITSELF??

WELL, NOT QUITE!!!!



Barn Pool Broadside for the Royals 1880 (Rame Heritage)

Charles and Camilla got.....





Fore Street Kingsand

Tina Collins



Compare heights of beaches

NOW

SOMEWHERE

ELSE.....



LONG ROOM AND BATHS

1769

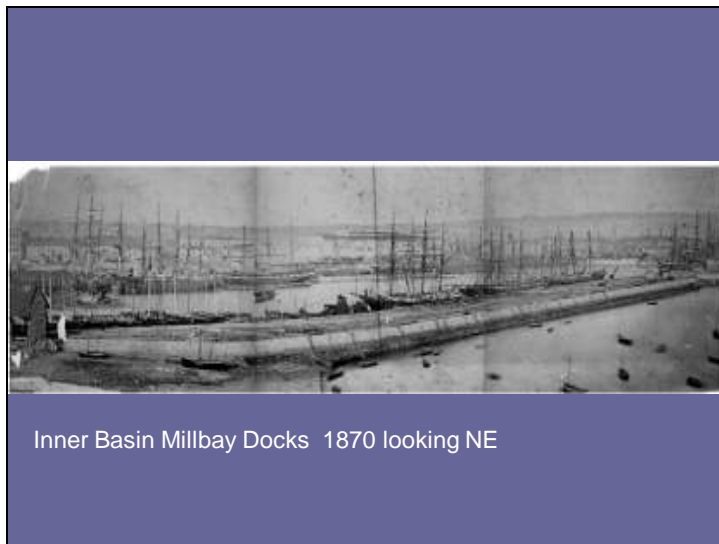
Plymouth has a passion for filling in water.....

Original purpose of the long room?  
Closeness of Stonehouse creek



The Long Room Custom House

Augustus Pugin 1808



Inner Basin Millbay Docks 1870 looking NE



Slide 44

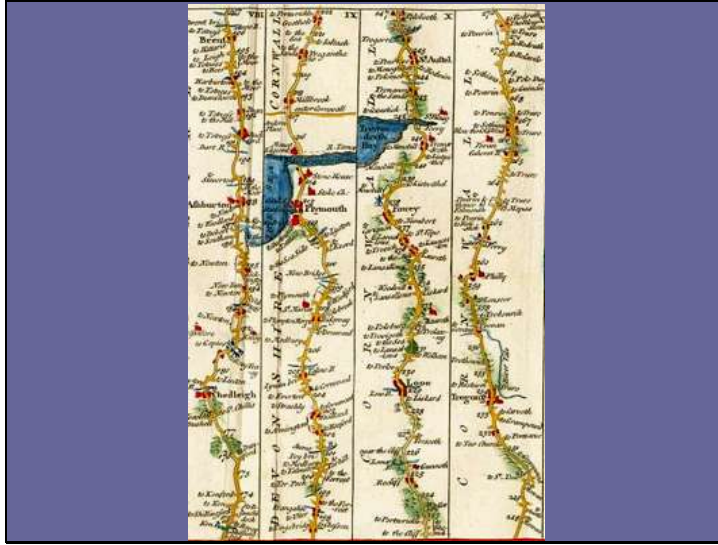
TRAVELLING.....



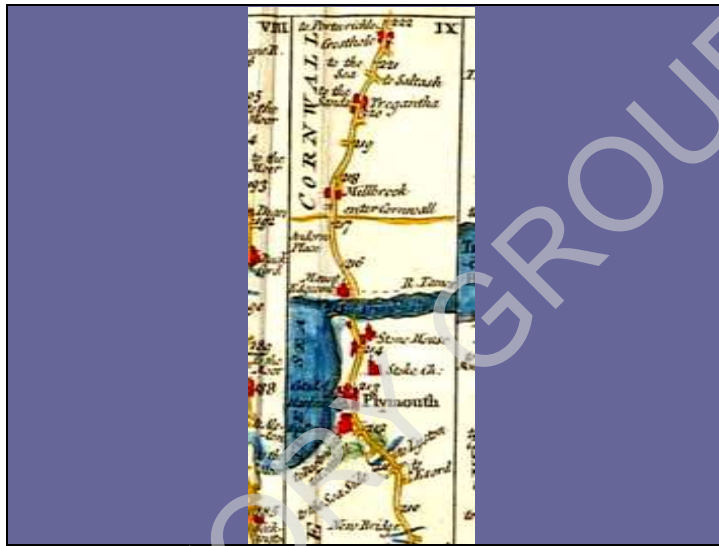
Early 1800s

Route map for the coach

Remember the AA travel plans????Slide 46

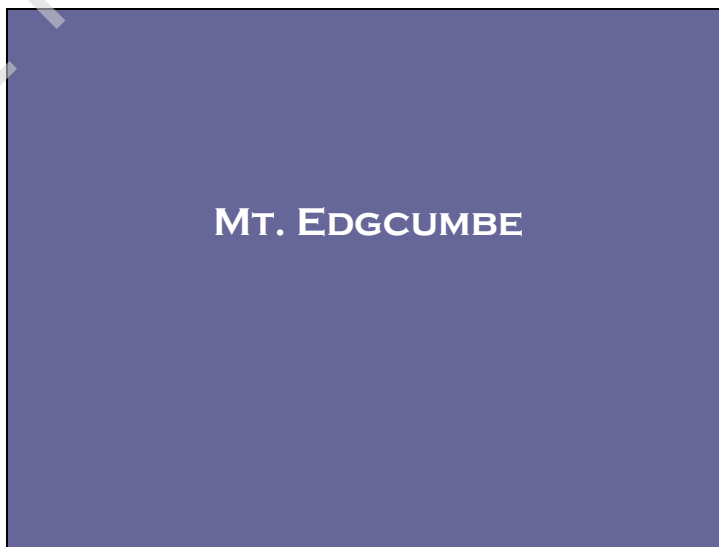


Slide 47

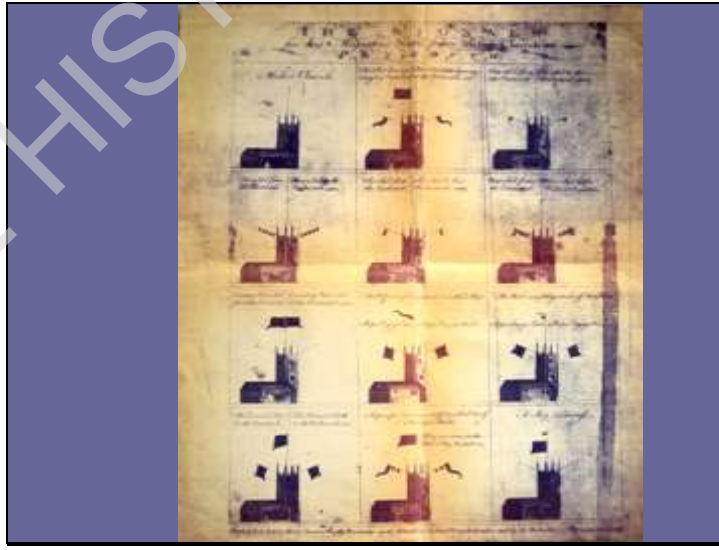


Main road crosses at Cremyll

Enter Cornwall border



**MT. EDGCUMBE**



Two new words..... MARGENT & WAFFT or WASST

.....includes ten drawings depicting Maker Church, above Cawsand Bay and west of Plymouth Sound, with varied arrangements of flags and balls, the 'Red flaggs' coloured.

Signals to be observ'd by the Watchman on Maker Church for **giveing advice to Dock, or Plymouth of what Ships pass by or come into this Port.** 1694

**The hanging out of a Ball signifies one Sail,** & to one, two three, four & five, as you'll find by Fig: 1:2: in the Margent, so more or less according as you see Ships.

**When you see Six Sail you are to put up two Balls,** one under the other as by Fig: 3: in the Margent. (margin)

When you see Seven, Eight or Nine Sail, you are to add a Ball as by Fig: 4: them Balls to be put up either on the East or West pole according to the Ships Bears.

When you see them Standing from the shore you are to put out a Ball on the Flagg Staff as by Fig: 7 & ye Red Flagg all ye time.

In case you see a Fleet that you know to be Enemys you are to put a Red Flagg on the Flagg Staff as also a white flagg either on the East or West pole, according as they bear both spread, as by Fig: 8:

When you see Ships passing (by) along, that you think will not come in (being far Distant) you are to put a Wafft on the pole, with Balls within it according to ye Number of Ships, but if a Fleet passing along, to hoist a Flagg as aforesaid, with a wafft on ye pole, as by Fig: 9.

**When a ball is hoisted on the Flagg staff with the Red flagg half Mast high,** is a Signal of a Ship in Distress by loosing her Masts, Drove from her Anchors &c:a as by Fig: 10.

**The Signal for Ships Engageing, or of a Privateer seen near the Harbour which is the Red flagg on the pole,** will be of great use likewise to our Guard Ship, which lies here with her Sails furl'd with ropeyarns, and ready to let Slip, & upon Sight of the Wafft, she Sails imediately out to the Ramhead or Mewstone & lies by; but when the Ball is put up Stands off imediately after them so may learn what they are.

**The Signal for the Enemy's Fleet being off,** will alarm the Country people to come down to the Platforms, & be ready to prevent any Desent which may otherwise happen by Surprize.

**The Signal of a Ball hoisted on the Flagg Staff, with the Red Flagg half Mast high** may be means to save Mens lives or Ship & hinder the Country people from plundering which is too often done in these parts.



Devonport, from Cremyll  
Valentin's letter  
HMS Nile - PORT GUARDSHIP DEVONPORT 1893 - 1903  
JW & SON

A LITTLE BIT OF  
PARADISE?



EMBACOMBE  
KAREN BICKHAM



EMPACOMBE 1905

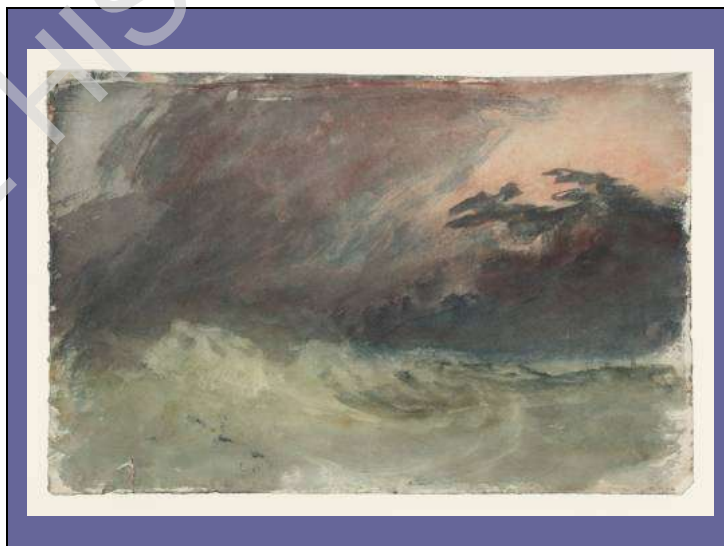
RAME HERITAGE

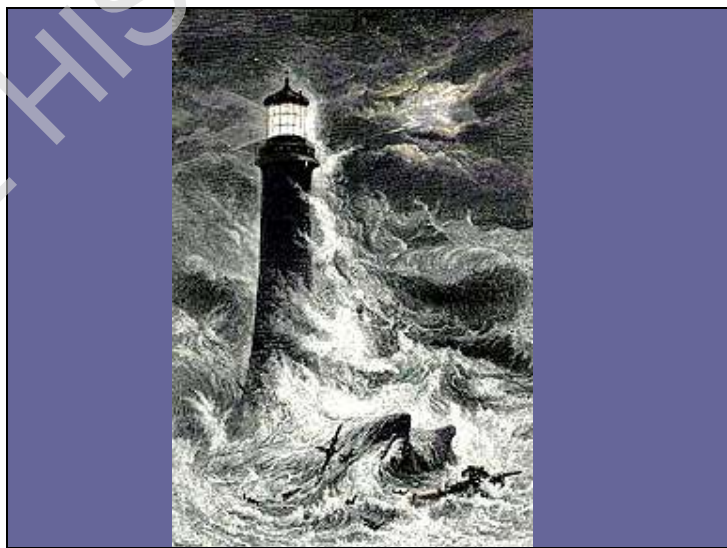
**TURNER'S  
'CIRCUMNAVIGATION'  
OF  
PLYMOUTH  
(FROM TATE GALLERY &  
NATIONAL MARITIME MUSEUM )**

*Rain, Steam, and Speed-The Great Western Railway*



*Snow Storm - Steam-Boat off a Harbour's Mouth. 1842. Oil on canvas. Tate*





Lithograph of Smeaton's Tower published 1869

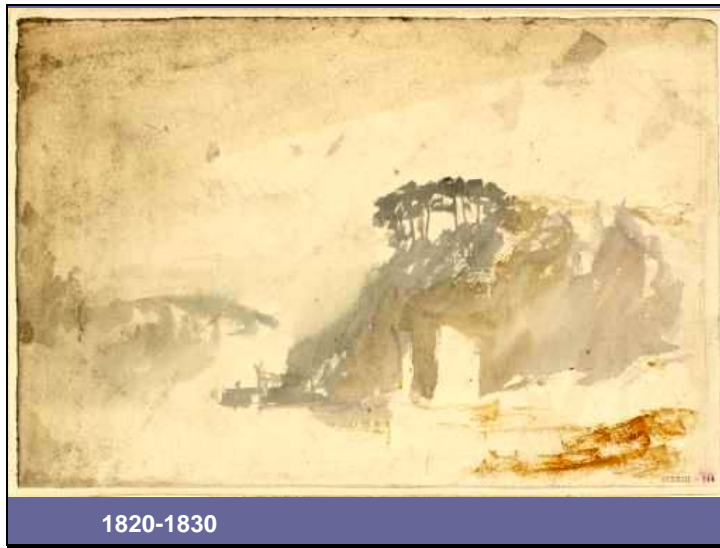
by Edmund Evans after J.M.W.Turner.



1814 A SHIP AGAINST THE MEW STONE,

THE MEW STONE. Original drawn by J. M. W. Turner,  
engraved by W. B. Cooke.





1820-1830

**MOUNT EDGCUMBE.** Original drawn by J. M. W. Turner, engraved by E. Goodall. from a series published in the 1830s.



1814 Plymouth, from Mount Edgcumbe by JMW Turner Plymouth Art Museum

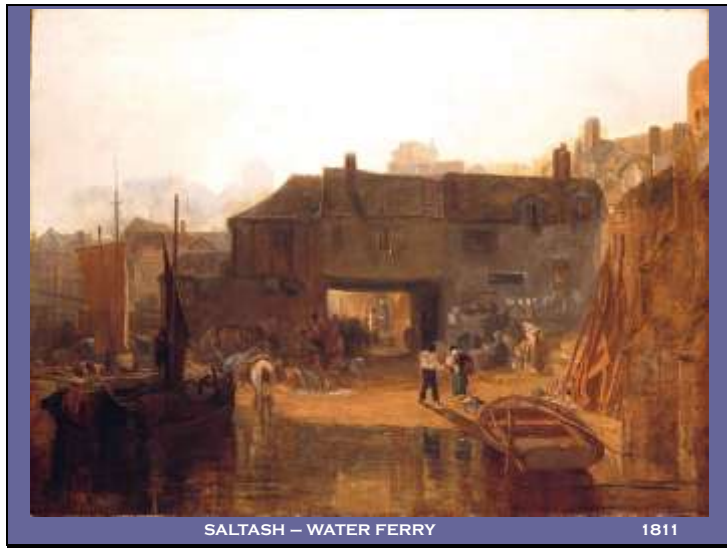


THE HAMOAZE FROM ST JOHN

1813

Hulks on the Tamar exhibited 1812  
(taken in lieu of death taxes)





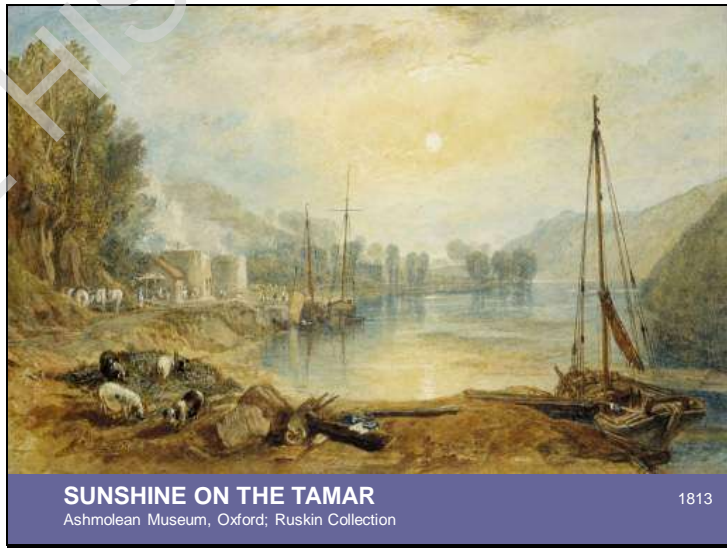
SALTASH – WATER FERRY

1811



SALTASH

1825



SUNSHINE ON THE TAMAR

Ashmolean Museum, Oxford; Ruskin Collection

1813



DEVONPORT DOCKYARD (?)



'PLYMOUTH CITADEL, A GALE',  
PENCIL AND WATERCOLOUR ON PAPER



1828/56???

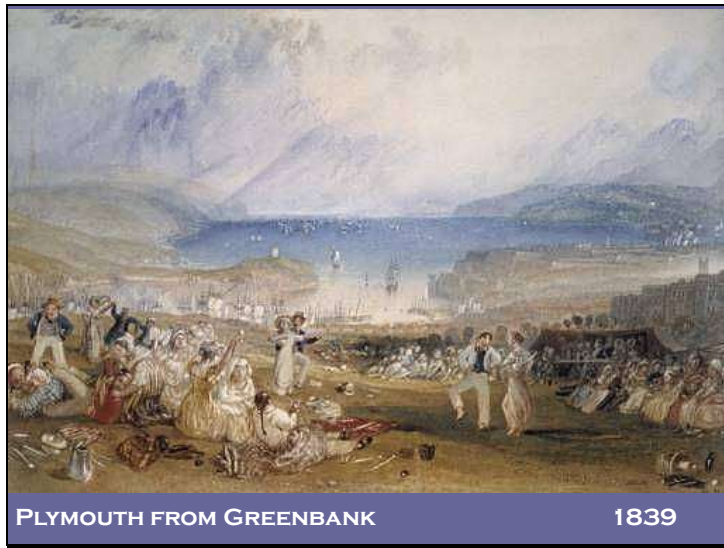


1825

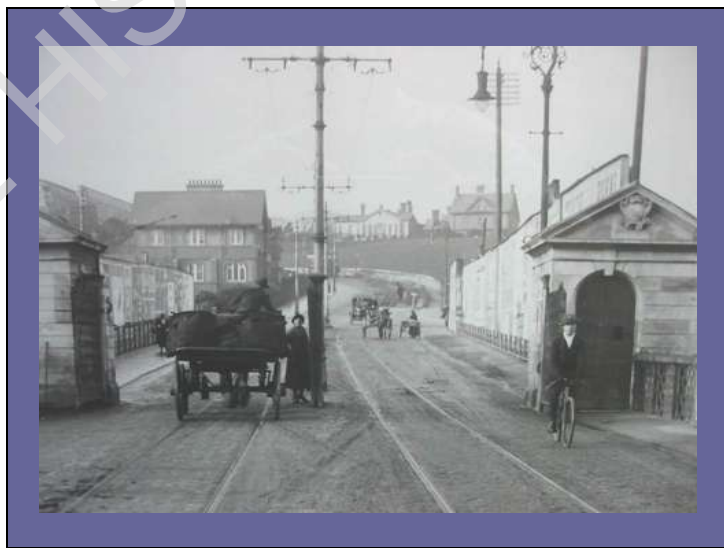


CITADEL FROM TURNCHAPEL

1825



HALF PENNY BRIDGE

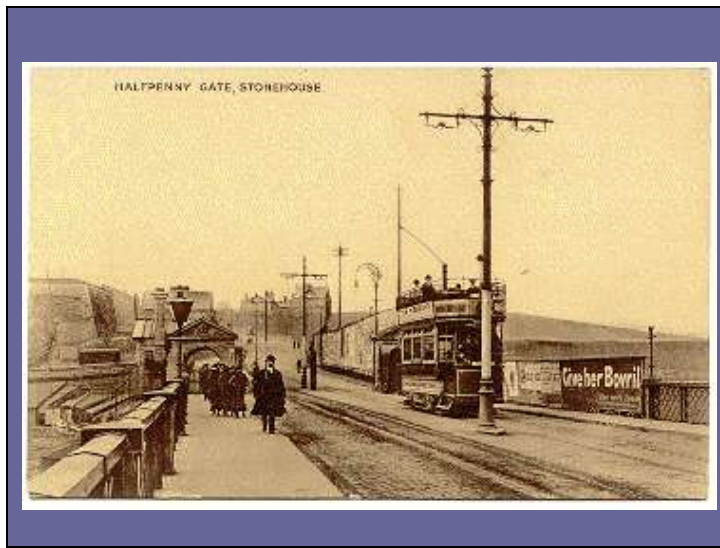


1/2d fee

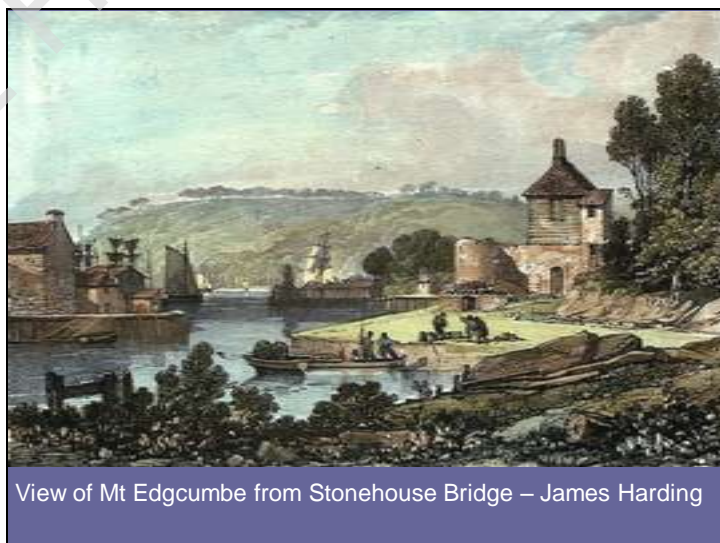
- 1767 Lord Mount Edgcumbe,
- The tolls were fixed by the Act at:
  - 2d return for a 1-horse drawn vehicle,
  - 3d for 2 horses
  - 6d for wagons drawn by more than 2 horses.
  - Pedestrians paid a halfpenny
  - the bridge was for ever known as "Halfpenny Bridge."

- Sunday October 21st 1917 passage across the Stonehouse Bridge was made **free for all servicemen and nurses in uniform but not on duty.**
- April 1st 1924, the Mayor, Mr Solomon Stephens, and Council visited all the remaining toll houses and officially **declared them free.**
- The creek above Stonehouse Bridge was filled in in 1972 when some 600,000 tons of ballast and rubble were used to help create 19 acres of recreational land





Any tram riders??





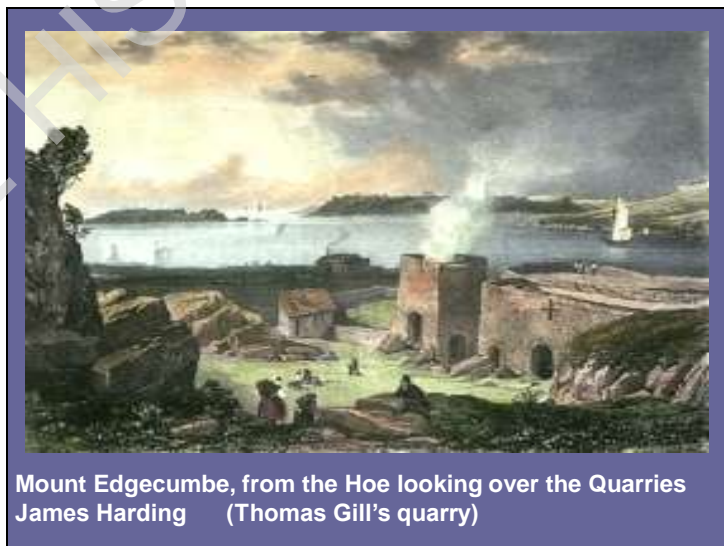
Stonehouse

James Harding



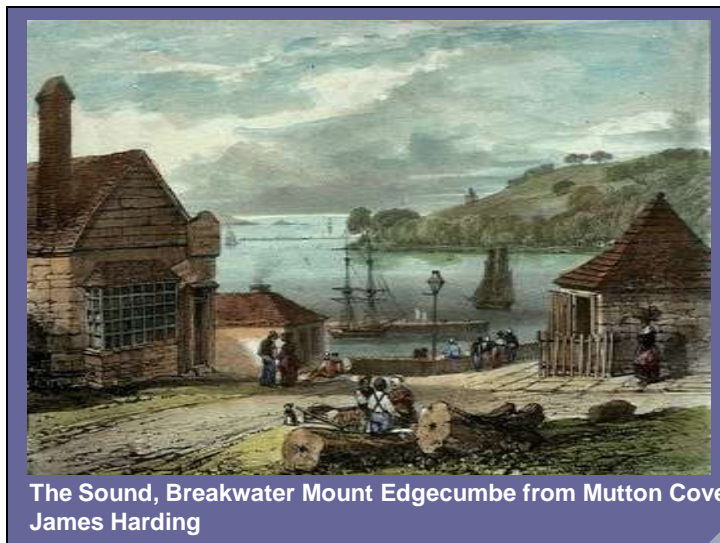
Stonehouse Bridge

W B Cooke 1836



Mount Edgecumbe, from the Hoe looking over the Quarries  
James Harding (Thomas Gill's quarry)

Kiln close in Cawsand name from????



The Sound, Breakwater Mount Edgecumbe from Mutton Cove  
James Harding

Visible breakwater/quay????



View from the Road to Maker Tower near the Upper Gate  
James Harding

**JUST FOUR HAROURS**

**IN**

**CORNWALL.....**



## Portwrinkle 1899

- 325 cwt total all catches
- £178 value ex shellfish     178 x 240 = 42720 fish
- £247 Value inc shellfish

- When:
- Cod 1 penny/1lb
- Herring 3/4d / 1lb
- Crab 1/6d/ dozen
- Lobster 12/- /dozen

(Sea Fisheries Report 1899)

## Portwrinkle 1919

- 190 cwt. wet fish (Plymouth 86,000 cwt)
- 910 crabs
- 2805 lobsters

MINISTRY OF AGRICULTURE AND FISHERIES

## SEA FISHERIES STATISTICAL TABLES 1949

1949

**TABLE 2A (continued).**  
**(ii) OTHER STATIONS (continued).**  
**SOUTH COAST**

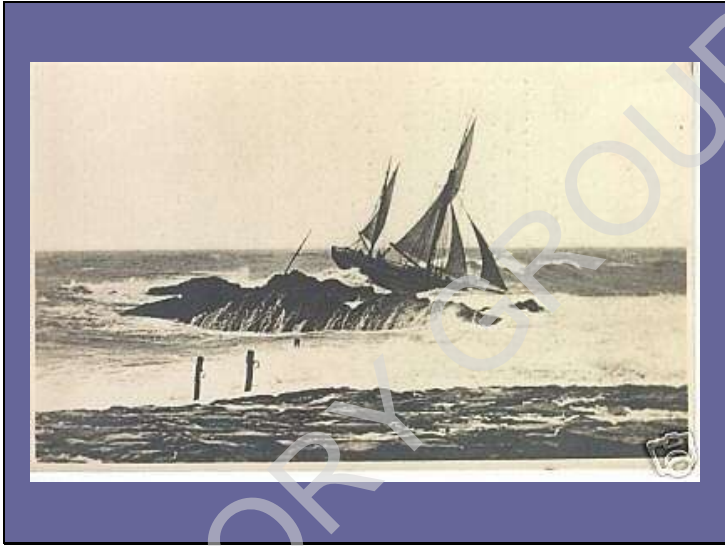
Stations	Total Demersal		Herrings		Other Pelagic		Total Wet Fish		Value of all Fish £
	Cwt.	£	Cwt.	£	Cwt.	£	Cwt.	£	
Dover ... ..	—	—	16,720	18,062	—	—	16,720	18,062	18,062
Hythe ... ..	1,077	5,800	232	451	1,173	1,265	2,482	7,586	7,586
Hope Cove ... ..	—	—	—	—	—	—	—	—	3,312
Yealm ... ..	—	—	—	—	—	—	—	—	1,258
Portwrinkle ... ..	5	18	—	—	3	13	9	33	426
Polperro ... ..	2,567	9,033	—	—	330	952	3,497	9,985	11,788
Fovey ... ..	314	411	—	—	35	89	239	500	747

## Portwinkle 1950

- 2 cwt conger
  - 5 cwt whiting
  - 2 cwt mackerel
- 
- Sea Fisheries Statistical Tables 1950



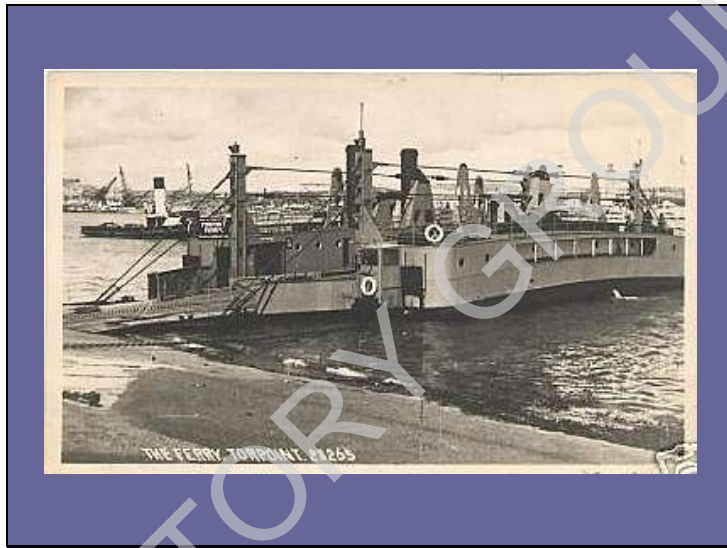






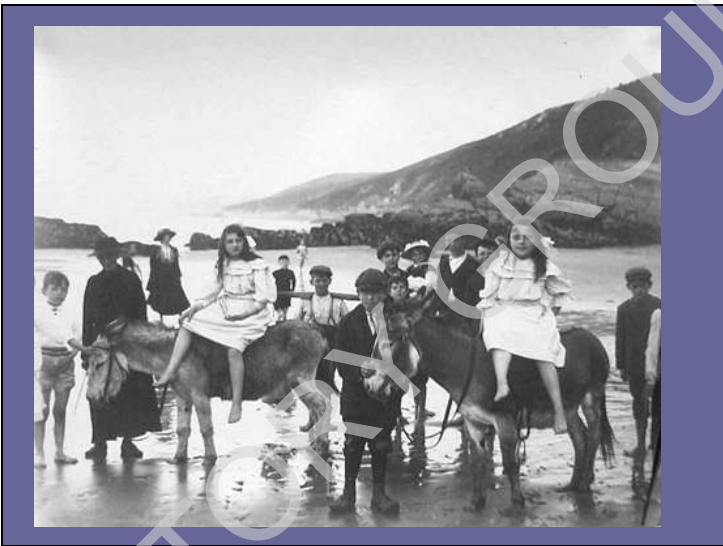
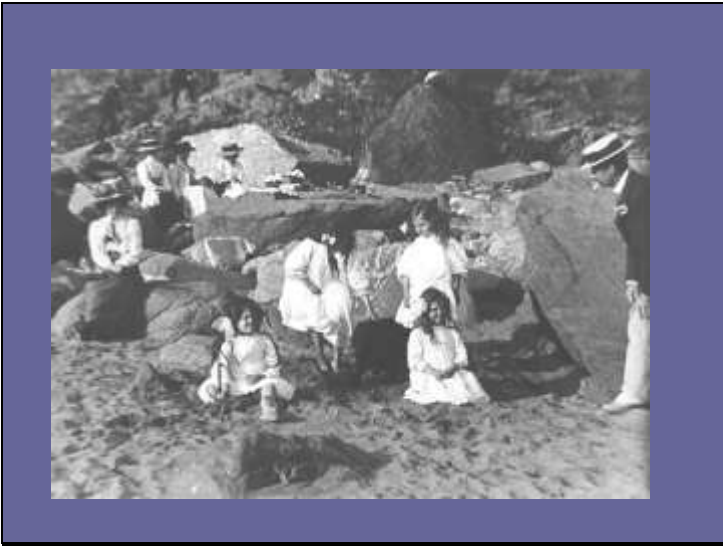
TORPOINT RENDELL FERRY 1890

(RAME HERITAGE)



RAME HISTORY GROUP 2011





A  
FRAUD....



Penlee Point

( 'after' Tuck Cards)



Penlee Point

( A Tuck postcard)



- LV6
  - She was painted green in 1971 to mark the wreck of the Texaco Caribbean in the Straits of Dover.
  - Eddystone was automated by Humber Ship Repairers Ltd. in 1984.
  - Today, she is still in the fleet of Trinity House as solarised light vessel. (????)
  -
- Built: 1947  
 Owner: Trinity House, London  
 Dimensions: 41.83m x 36.27m x 4.57m  
 Shipyard: Philip & Son, Dartmouth, Devon, England  
 Tender price: £61,705

**WEBSITES FOR LOCAL HISTORY**

- <http://www.rhq.org.uk/>
  - <http://www.cyber-heritage.co.uk/>
  - <http://www.cyber-heritage.co.uk/maps/mayflower.htm>
  - <http://web.ukonline.co.uk/Stephen.Johnson/air/>
  - <http://www.virtualhistory.co.uk/>
  - <http://www.palmerstonforts.org.uk>
  - <http://www.rameheritage.co.uk/index.html>
  - <http://marrah.tripod.com/index.htm>
  - <http://www.ancient-line-art.com/>
  - <http://www.postcardworld.co.uk/>
  - <http://sunvfield.co.uk/devspace/cornwall.asp>
  - <http://www.timwilsonuk.com/>
  - <http://www.henrywimbush.co.uk/id21.htm>
  - <http://special.st-andrews.ac.uk/caspecial/index.php?a=co-action&key=0&pg=2>
  - <http://www.simplonpc.co.uk/>
  - <http://www.cuttersandluggers.co.uk/links.asp>
  - <http://www.swmaritime.org.uk/articles.php?atv=13>
  - <http://www.a2a.org.uk/>
  - <http://www.devon.gov.uk/etched?url=etched4ixbin%2Fclient.exe&TXP=1&TXR=100139>
  - <http://www.plymouthdata.info/contents.htm>
  - <http://www.villagefamilytree.co.uk/>
  - <http://www.sbenven-plus.com/Nav.html>
  - <http://www.navyphotos.co.uk/index.html>
  - <http://www.sbay.co.uk/>
  - <http://www.the-institute.org.uk/>
- our very own.....  
 Steve Johnson's site
- Aerial pictures  
 the best!!!!  
 local forts etc  
 quality local site  
 smuggling
- A selection  
 of sites  
 selling  
 local  
 postcards
- search for Millbrook etc...  
 old boats S/W Cornwall  
 SW Maritime History. Society.  
 Archive/document resource  
 Devon Libraries Resource  
 Plymouth History  
 Where did I come from???
- Misc. local naval records
- Search all local names...
- Not forgetting!!!!**

Roger Collins January 2009