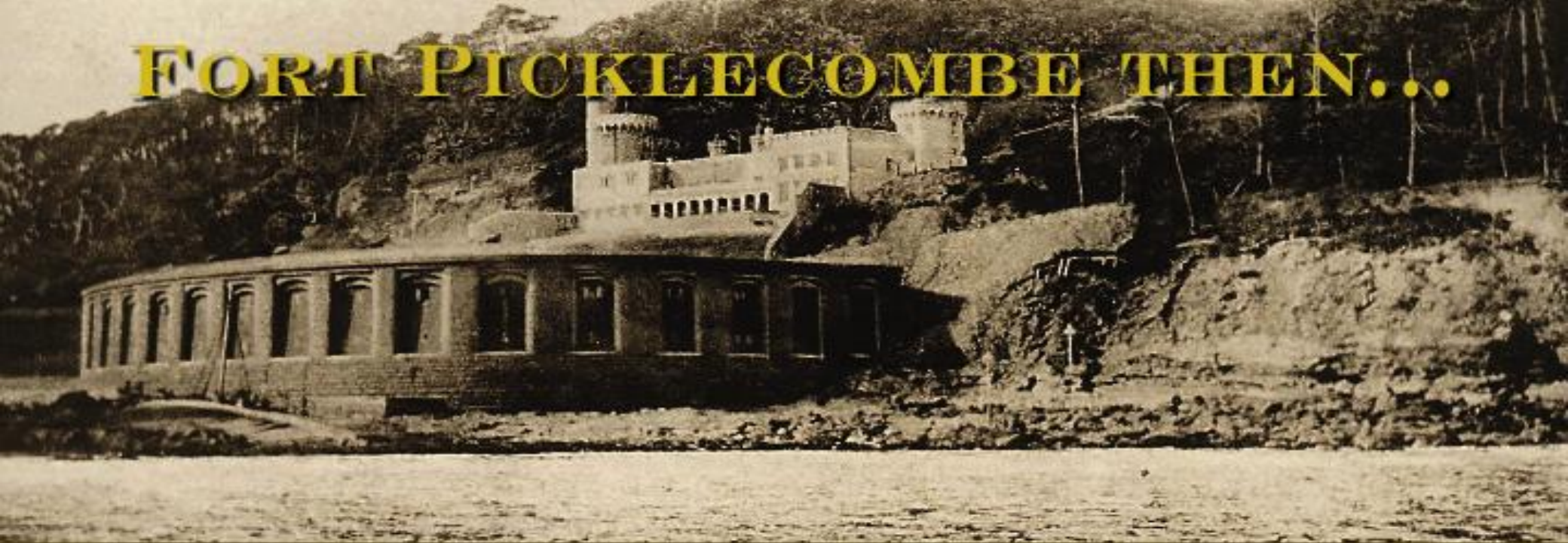


# FORT PICKLECOMBE THEN...

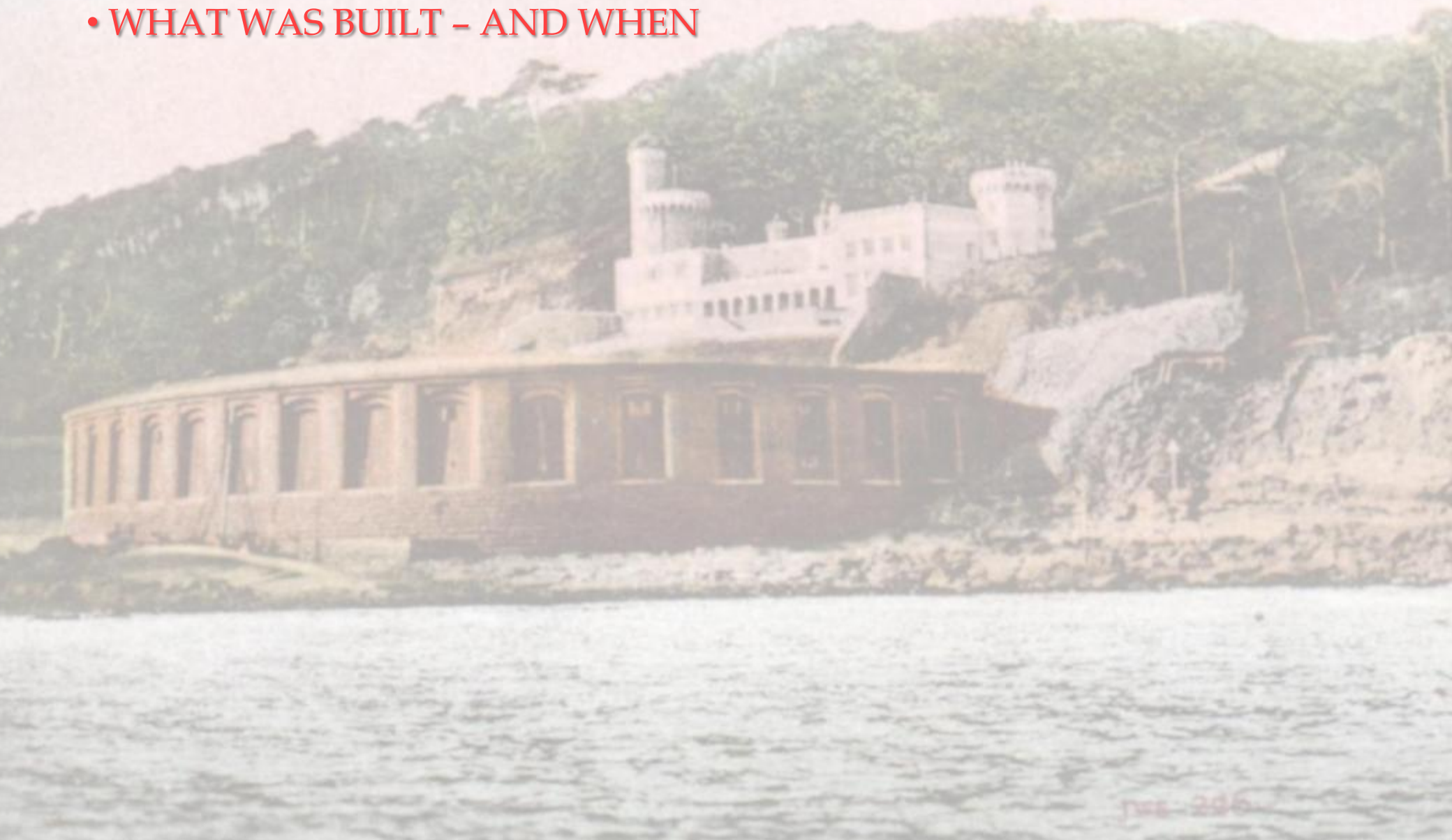


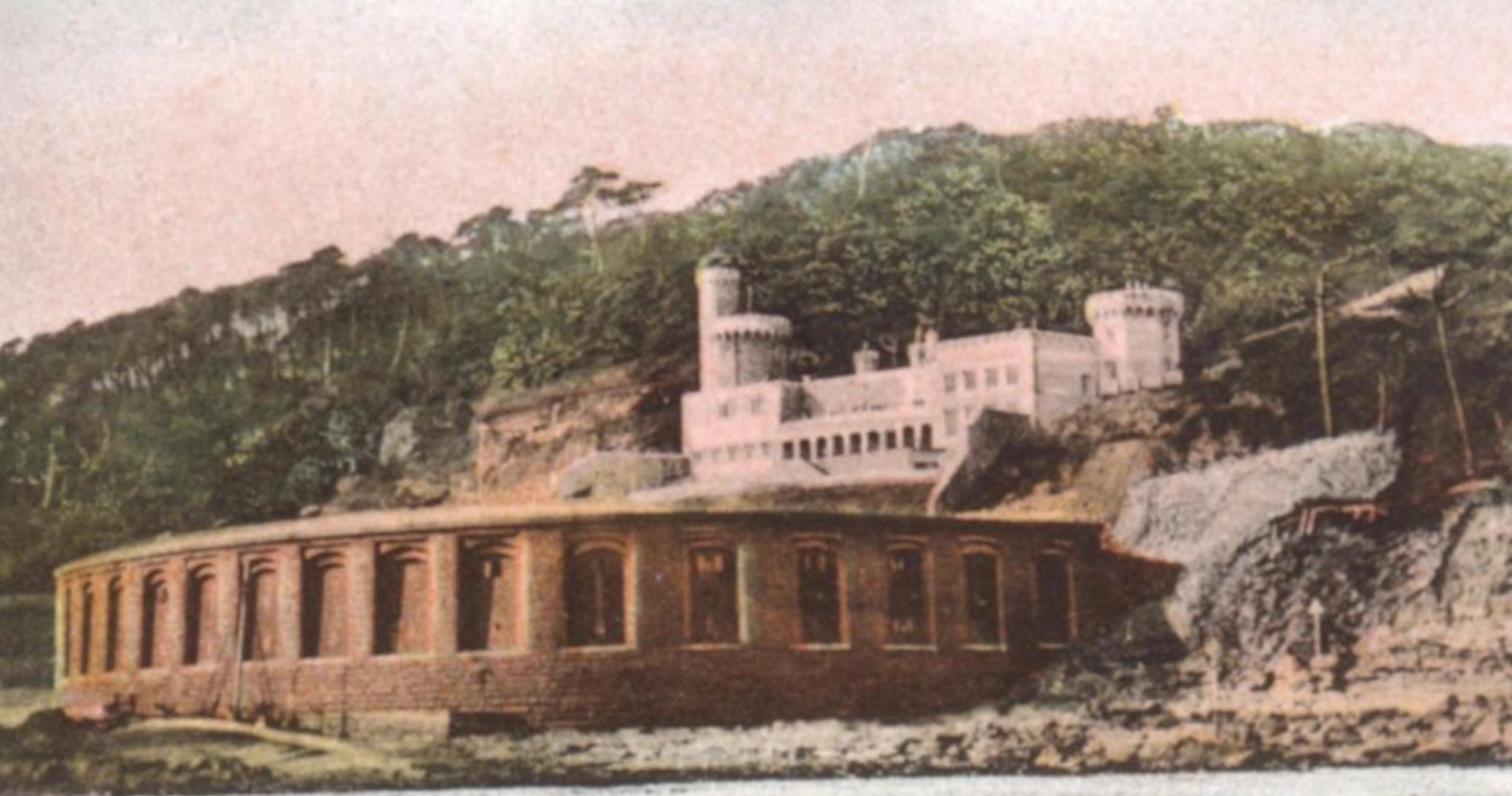
This document is a compilation of the images shown in the presentation given by Brian Raynard and Dennis Snogging to the Rame Peninsula History Group in March 2012

Brian Rayden

## PICKLECOMBE BATTERY

- WHAT WAS BUILT - AND WHEN





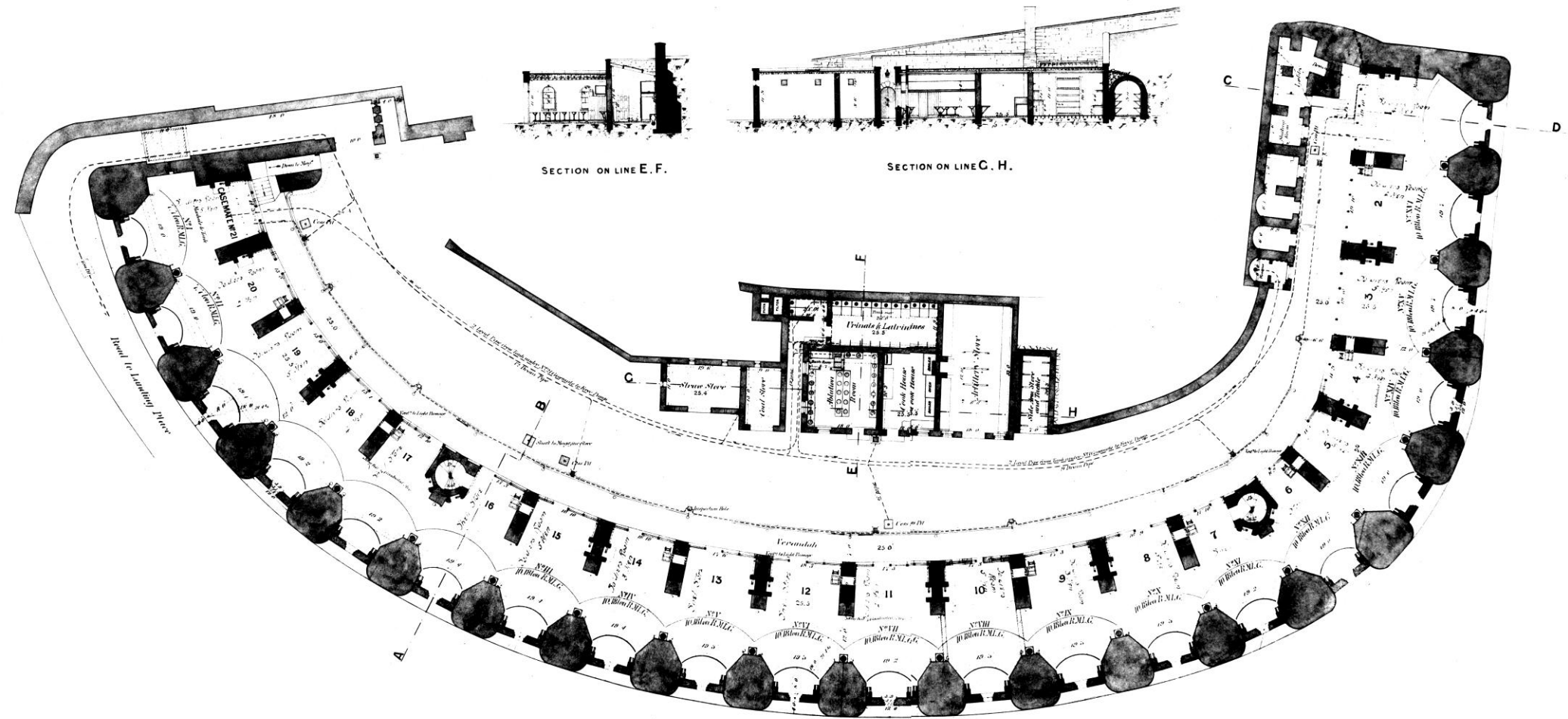
PICKLECOMBE BATTERY

1886-296

# PLYMOUTH DEFENCES

## PICKLECOMBE FORT.

### PLAN OF FIRST GUN FLOOR.



**THE OFFICERS MESS**





LR

1848

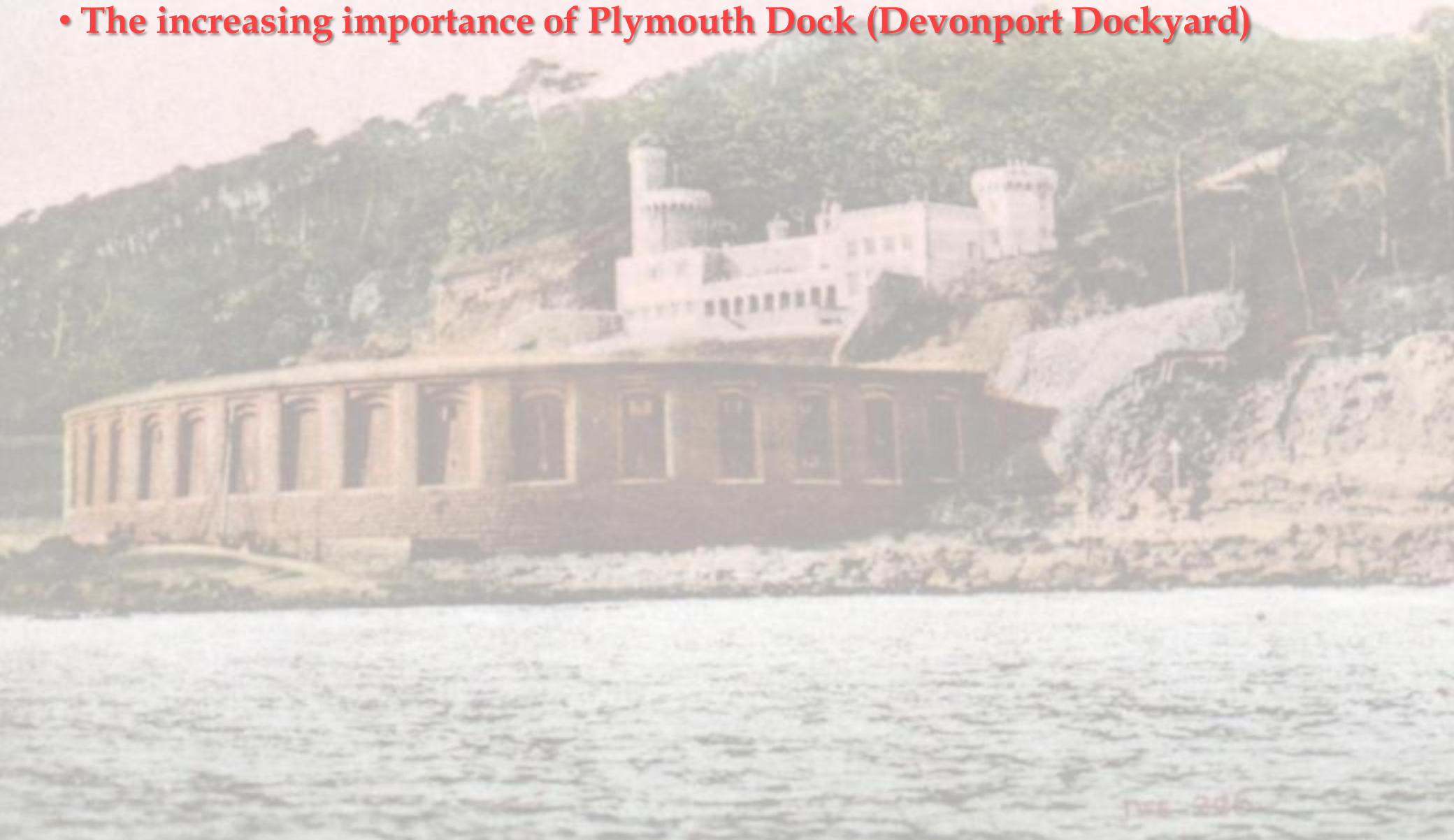


## WHY THE BATTERY WAS BUILT



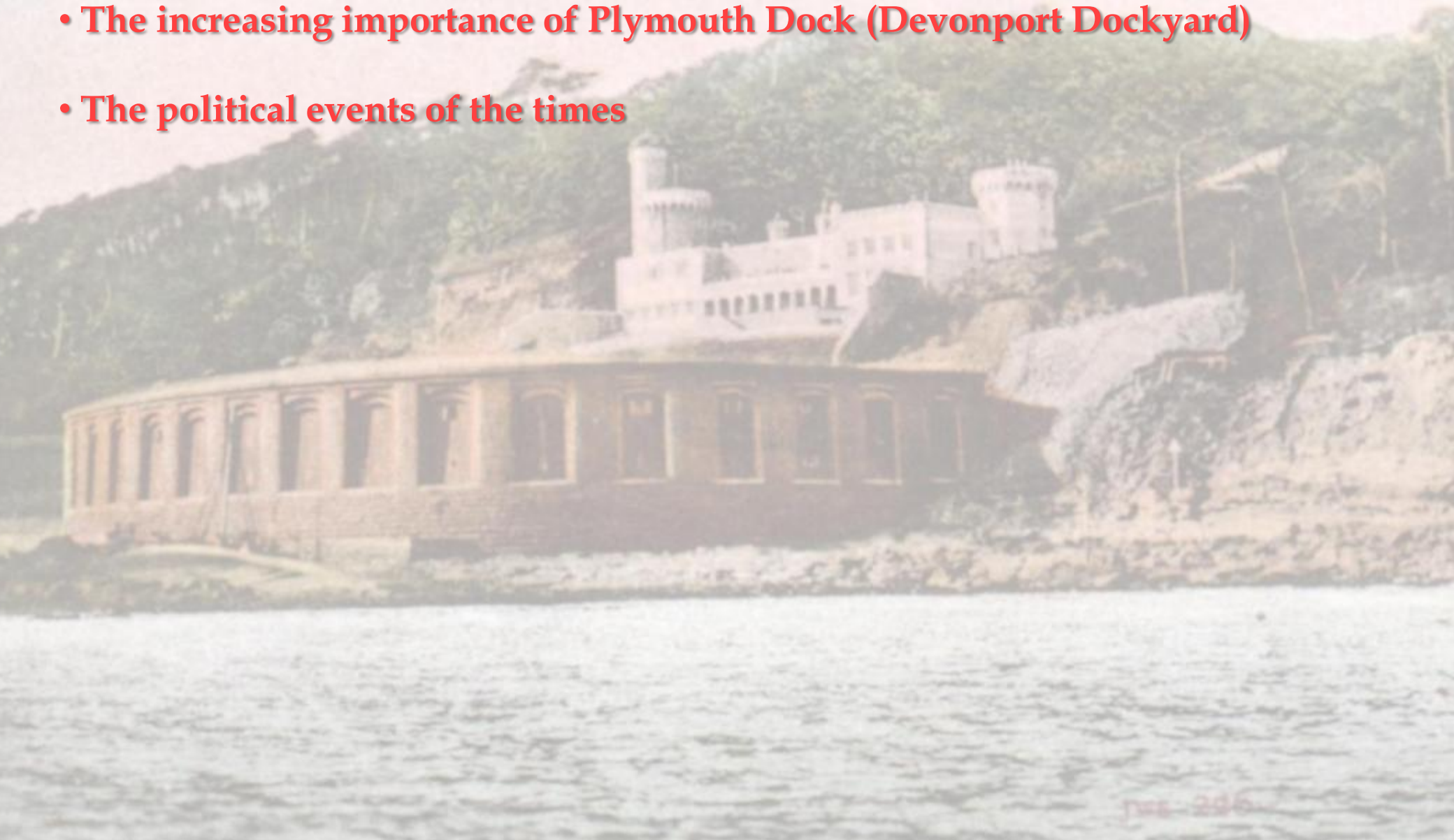
## WHY THE BATTERY WAS BUILT

- The increasing importance of Plymouth Dock (Devonport Dockyard)



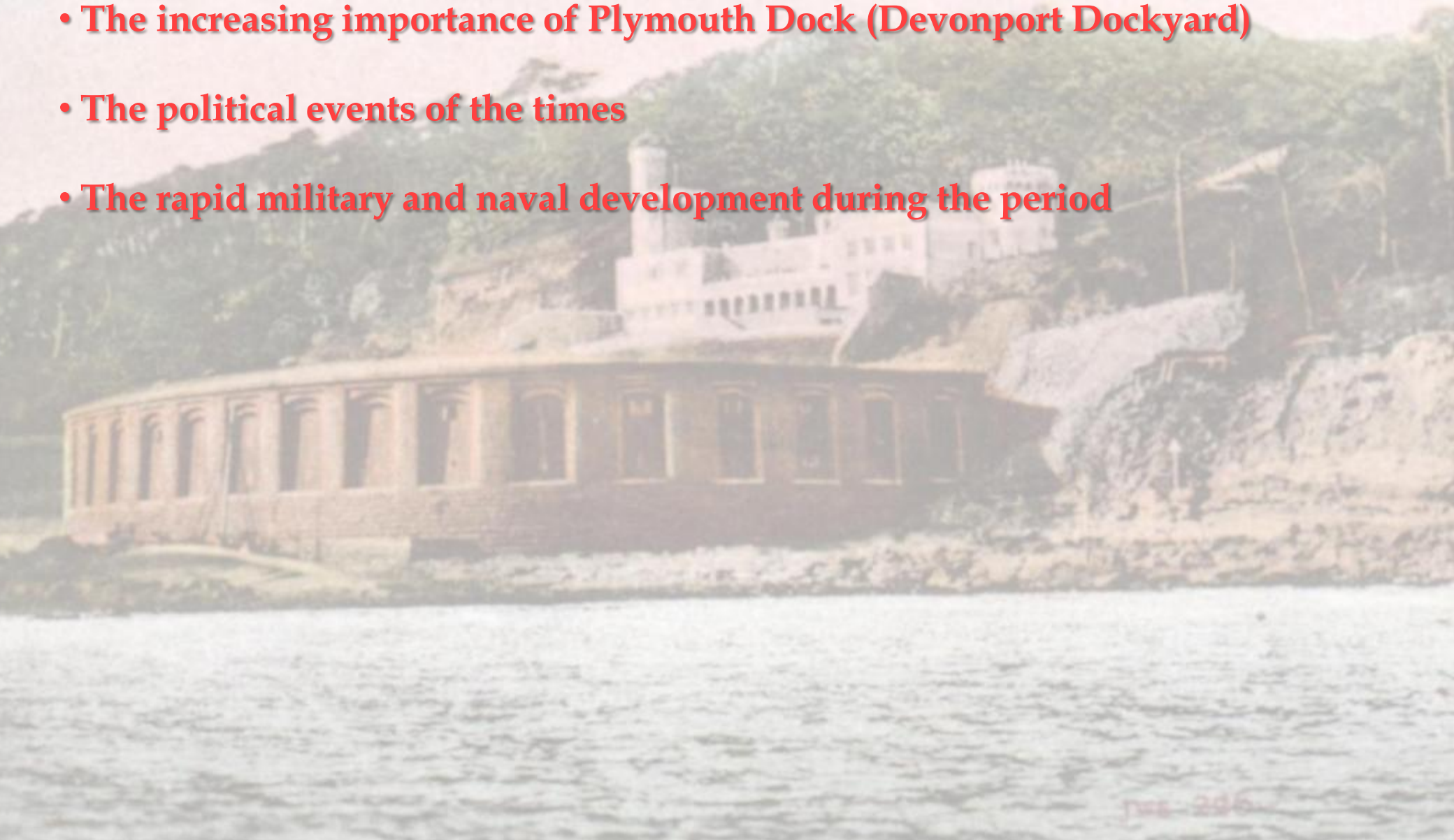
## **WHY THE BATTERY WAS BUILT**

- **The increasing importance of Plymouth Dock (Devonport Dockyard)**
- **The political events of the times**



## **WHY THE BATTERY WAS BUILT**

- **The increasing importance of Plymouth Dock (Devonport Dockyard)**
- **The political events of the times**
- **The rapid military and naval development during the period**





PLYMOUTH DOCK



Cremyll

barn Pool

Fort Picklecombe



Fort Picklecombe





# THE POLITICAL SITUATION



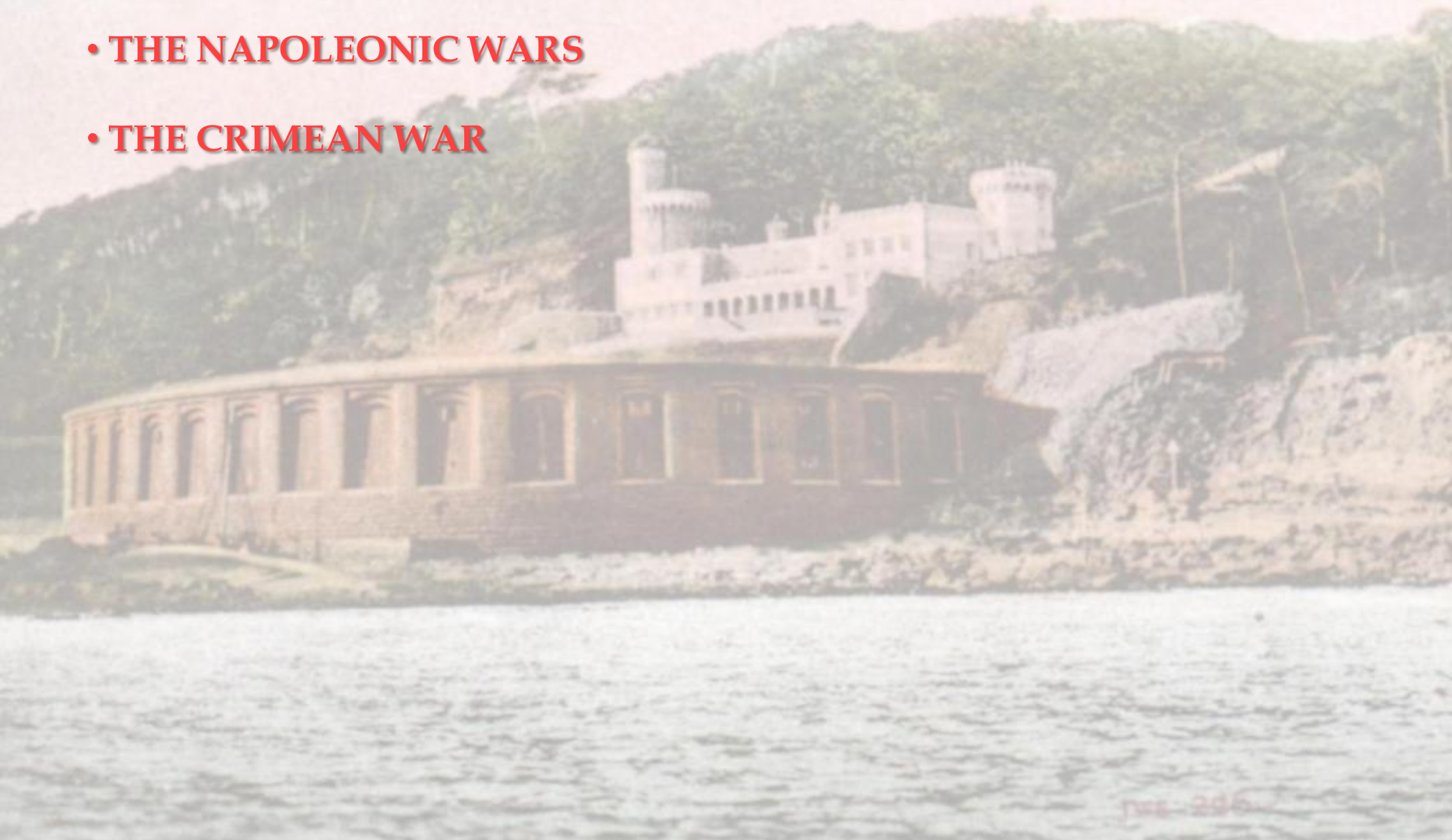
# THE POLITICAL SITUATION

- THE NAPOLEONIC WARS



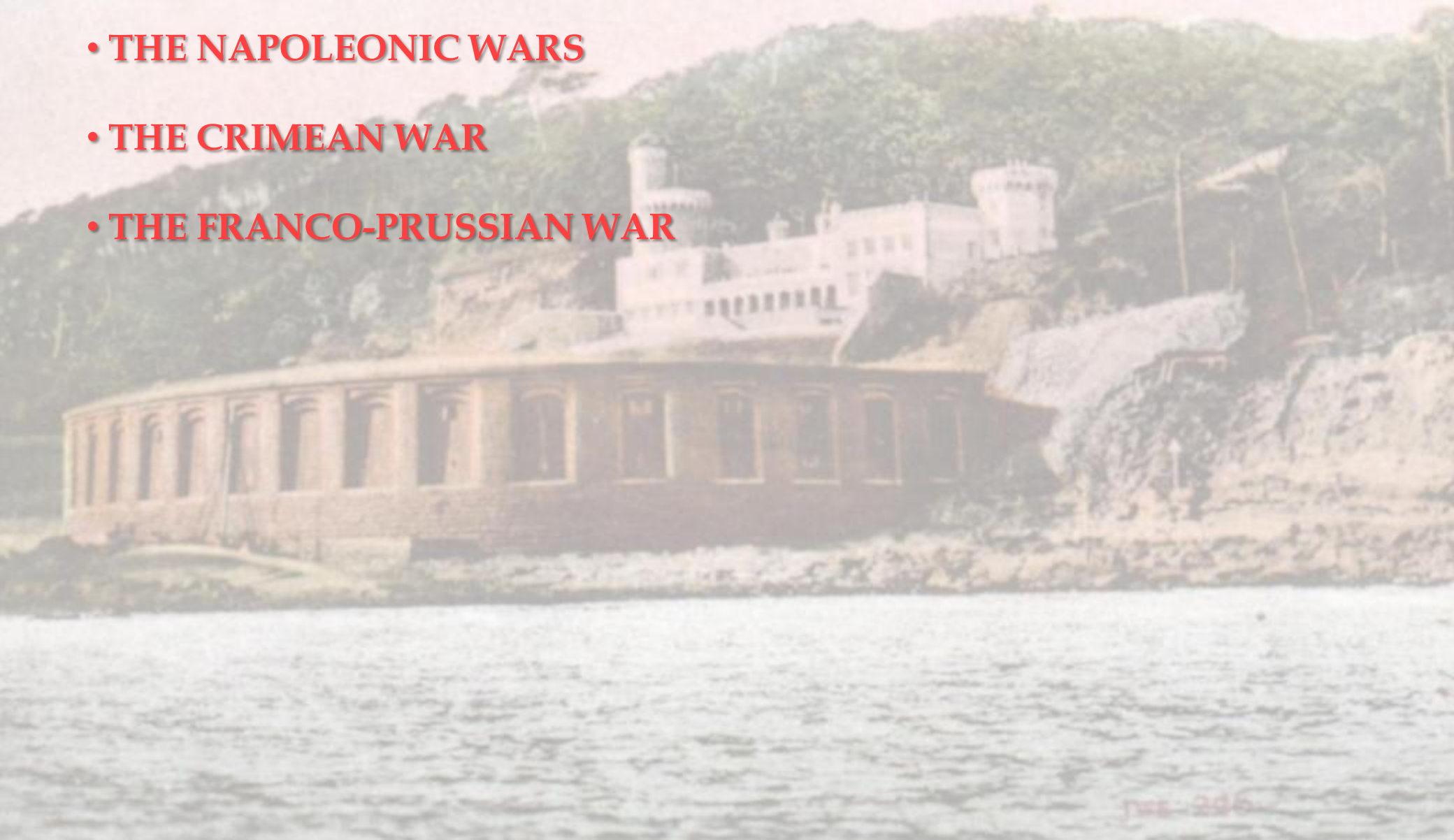
# THE POLITICAL SITUATION

- THE NAPOLEONIC WARS
- THE CRIMEAN WAR



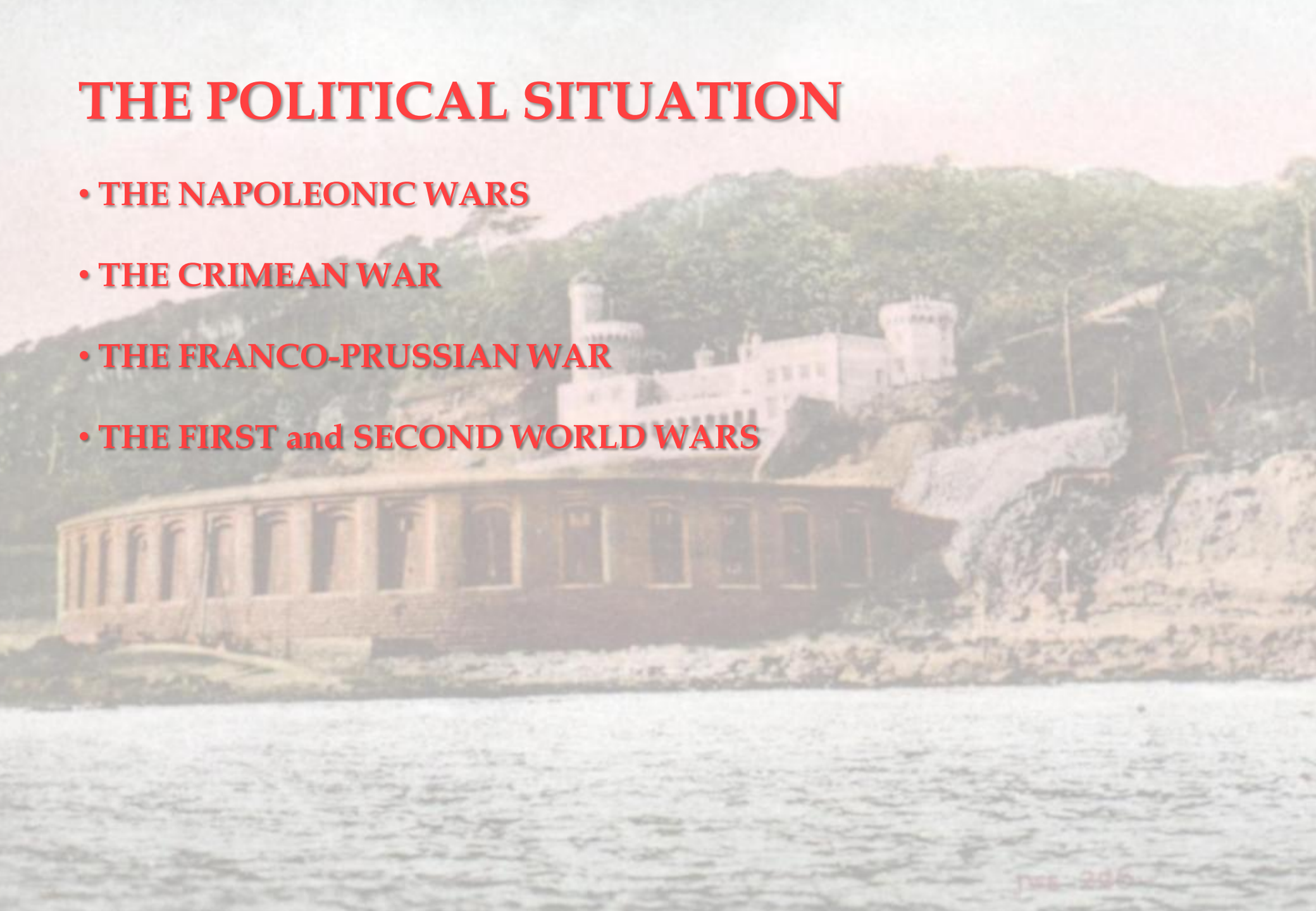
# THE POLITICAL SITUATION

- THE NAPOLEONIC WARS
- THE CRIMEAN WAR
- THE FRANCO-PRUSSIAN WAR



# THE POLITICAL SITUATION

- THE NAPOLEONIC WARS
- THE CRIMEAN WAR
- THE FRANCO-PRUSSIAN WAR
- THE FIRST and SECOND WORLD WARS



# ARMING THE BATTERY





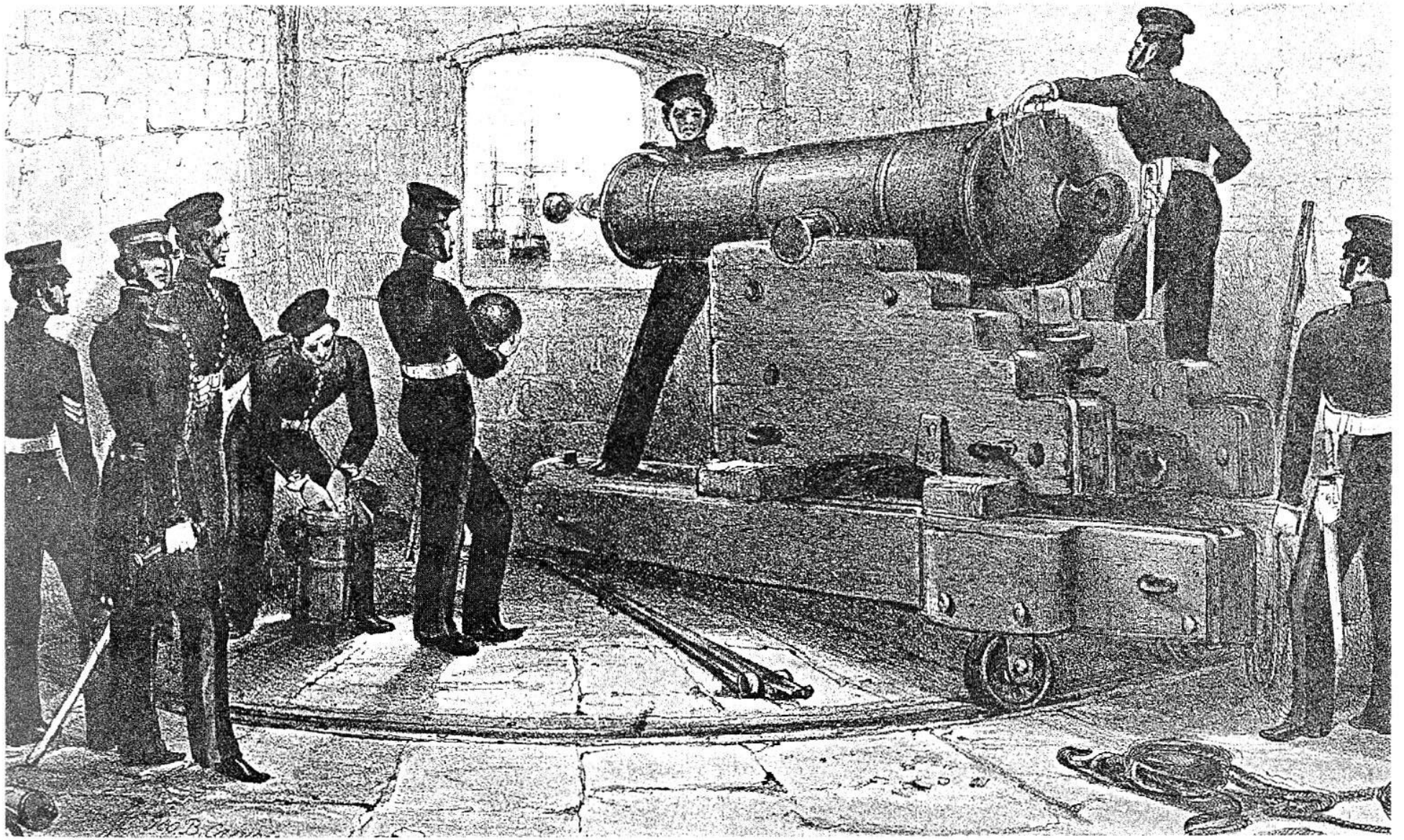


THE

PULL

## 68 pounder SBML





*Plate 14. A 68 pdr gun in a casemate. (Campion c.1845).*

**Why the original guns were obsolete**



Why the original guns were obsolete



Why the original guns were obsolete



Why the original guns were obsolete



**Why the original guns were obsolete**

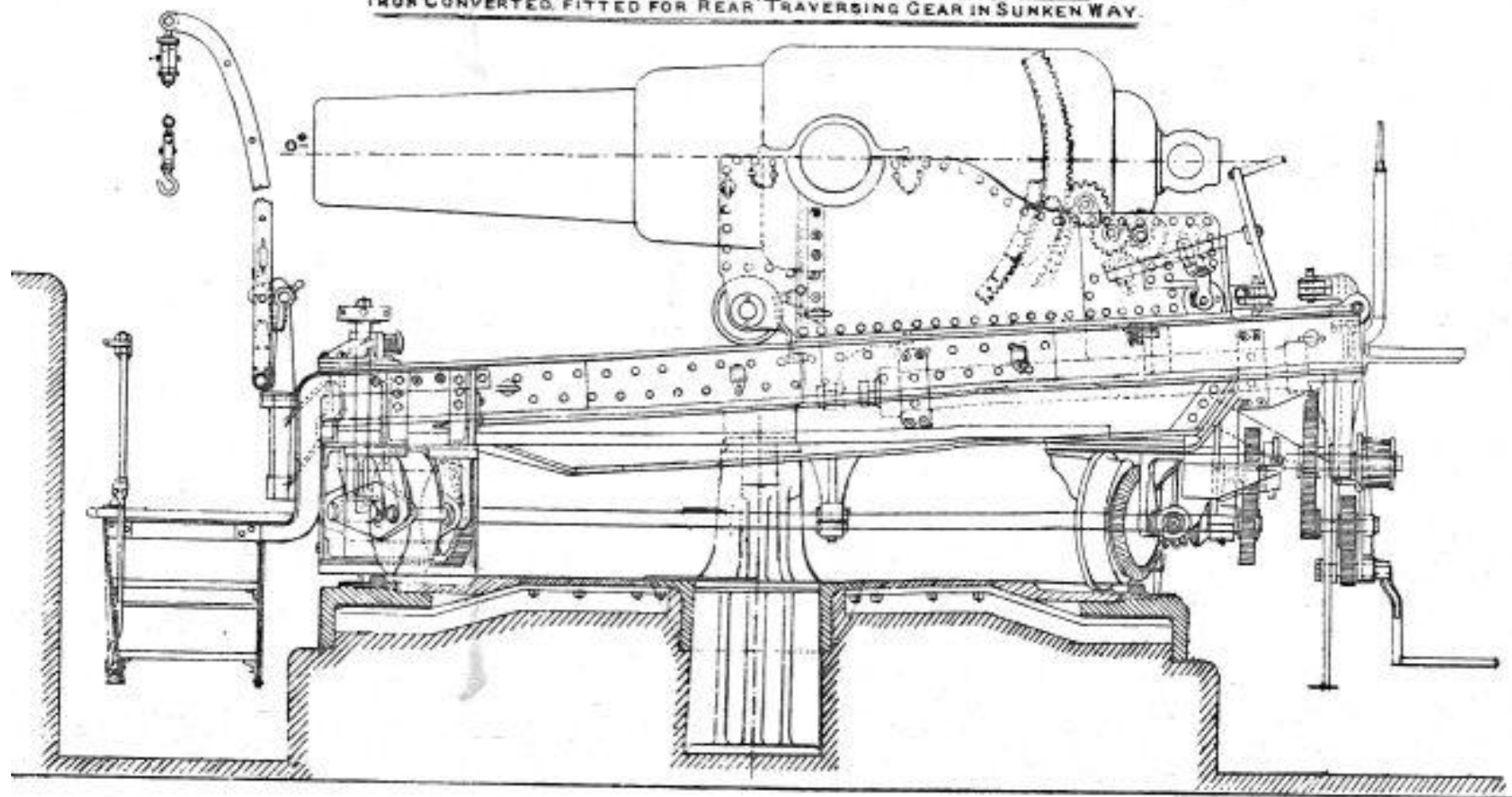




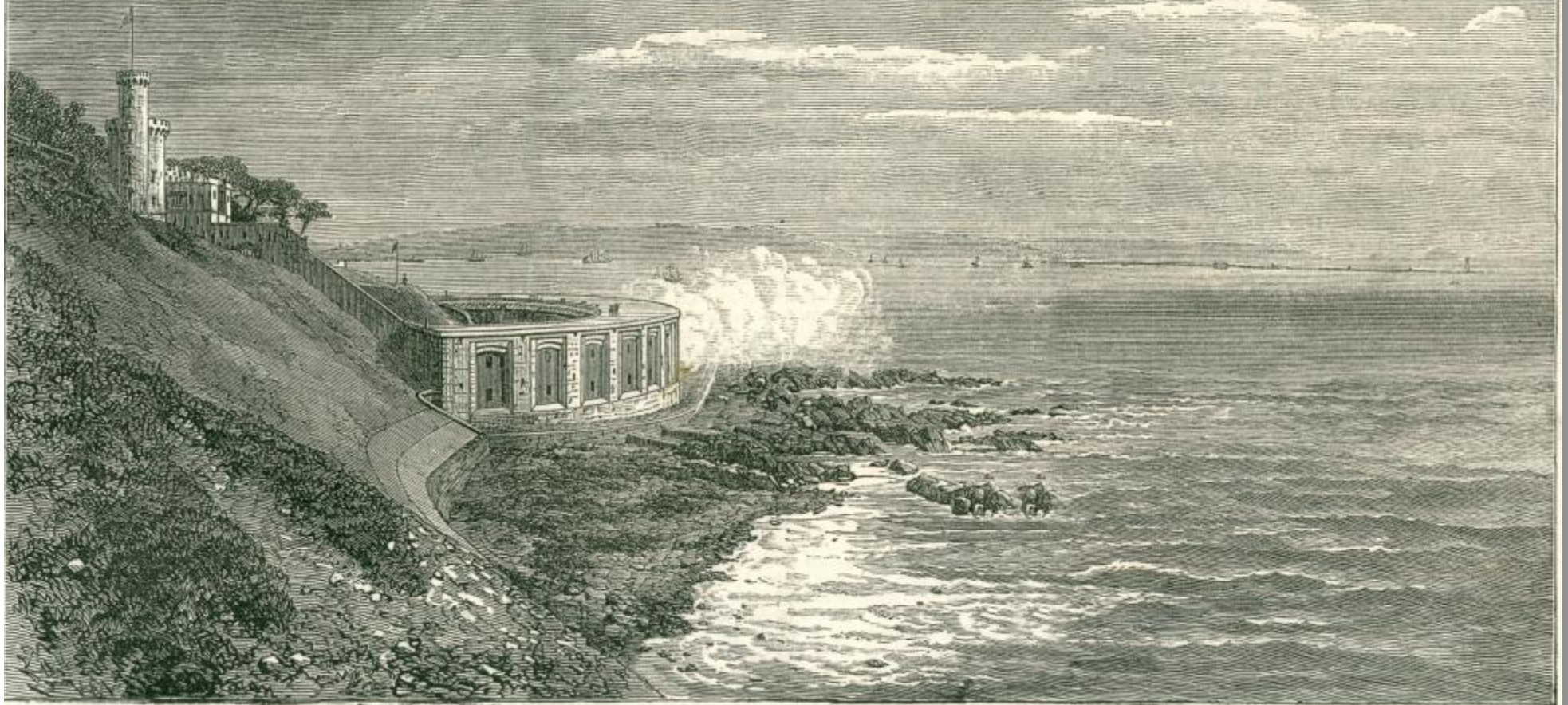
9 inch RML



**CARRIAGE, GARRISON, R. M. L. 9-INCH, MARK II.**  
— IRON CONVERTED —  
**SLIDE, L. R. M. L. 9-INCH, PIVOT, 7 FT. PARAPET, C. MARK III.**  
IRON CONVERTED, FITTED FOR REAR TRAVERSING GEAR IN SUNKEN WAY.



# Test Firing 1872

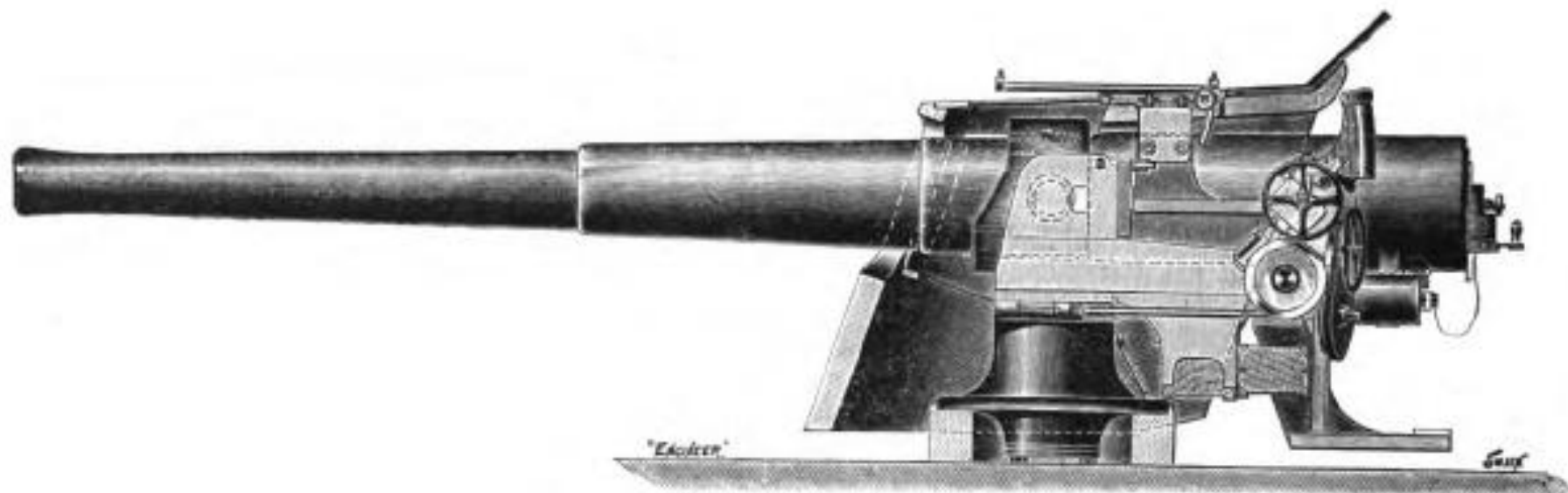


ARTILLERY EXPERIMENTS AT PICKLECOMBE FORT, PLYMOUTH.



6 inch RBL

## 6 inch QF



6-IN. 40-CALIBRE QUICK-FIRING WIRE-GUN.

# Twin and single Bofors



A photograph of a weathered concrete structure, possibly a searchlight housing, featuring a semi-circular opening. The structure is built with multiple layers of concrete blocks and shows signs of rust and wear. The background consists of green trees and a clear blue sky.

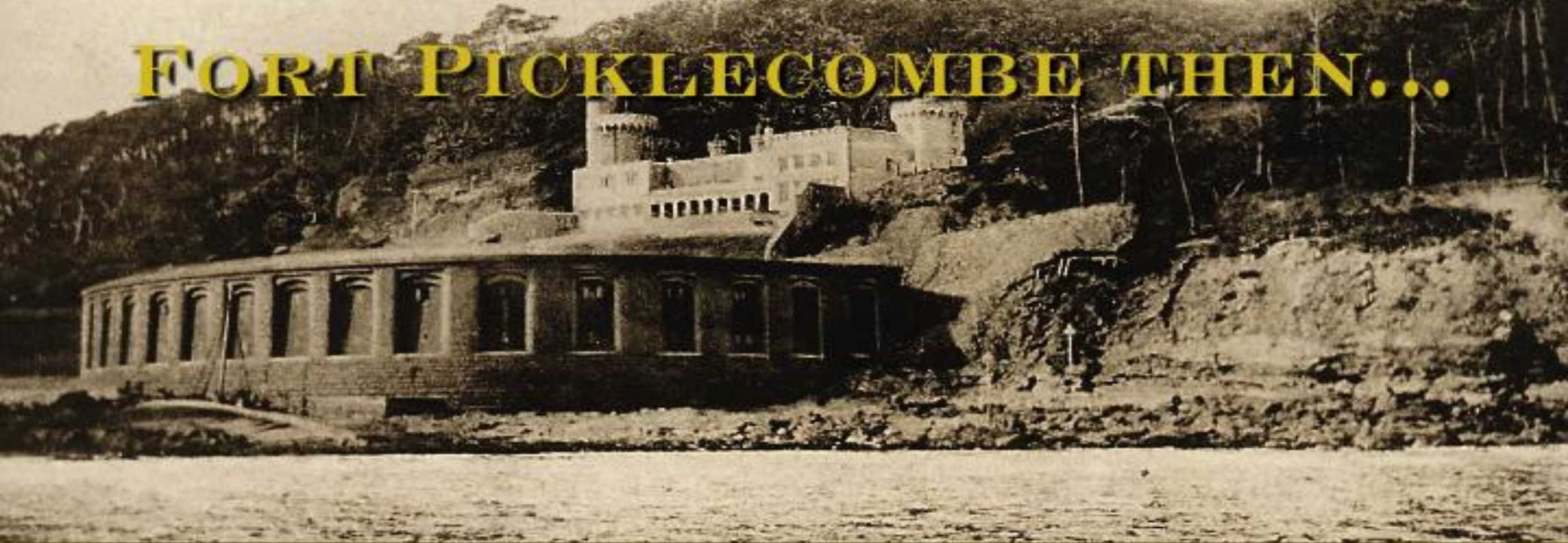
One of the two  
searchlights





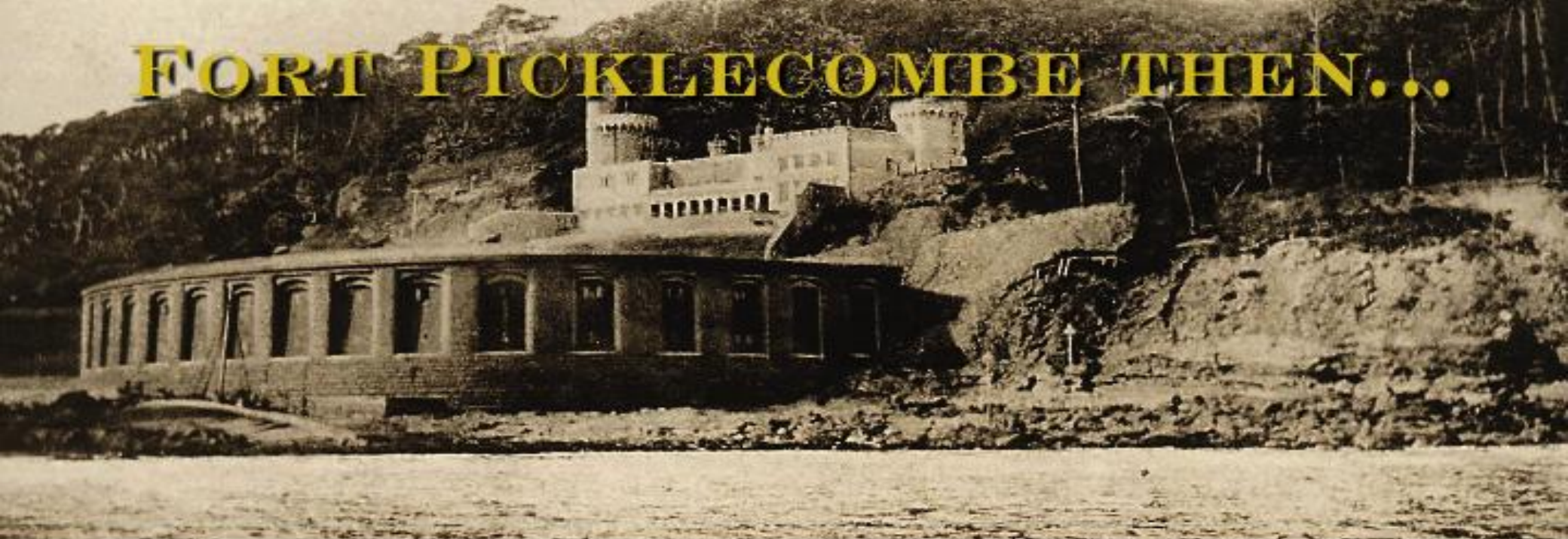
**Aircraftman Shaw (circa 1930)**

# FORT PICKLECOMBE THEN...



Brian Rayden

# FORT PICKLECOMBE THEN...

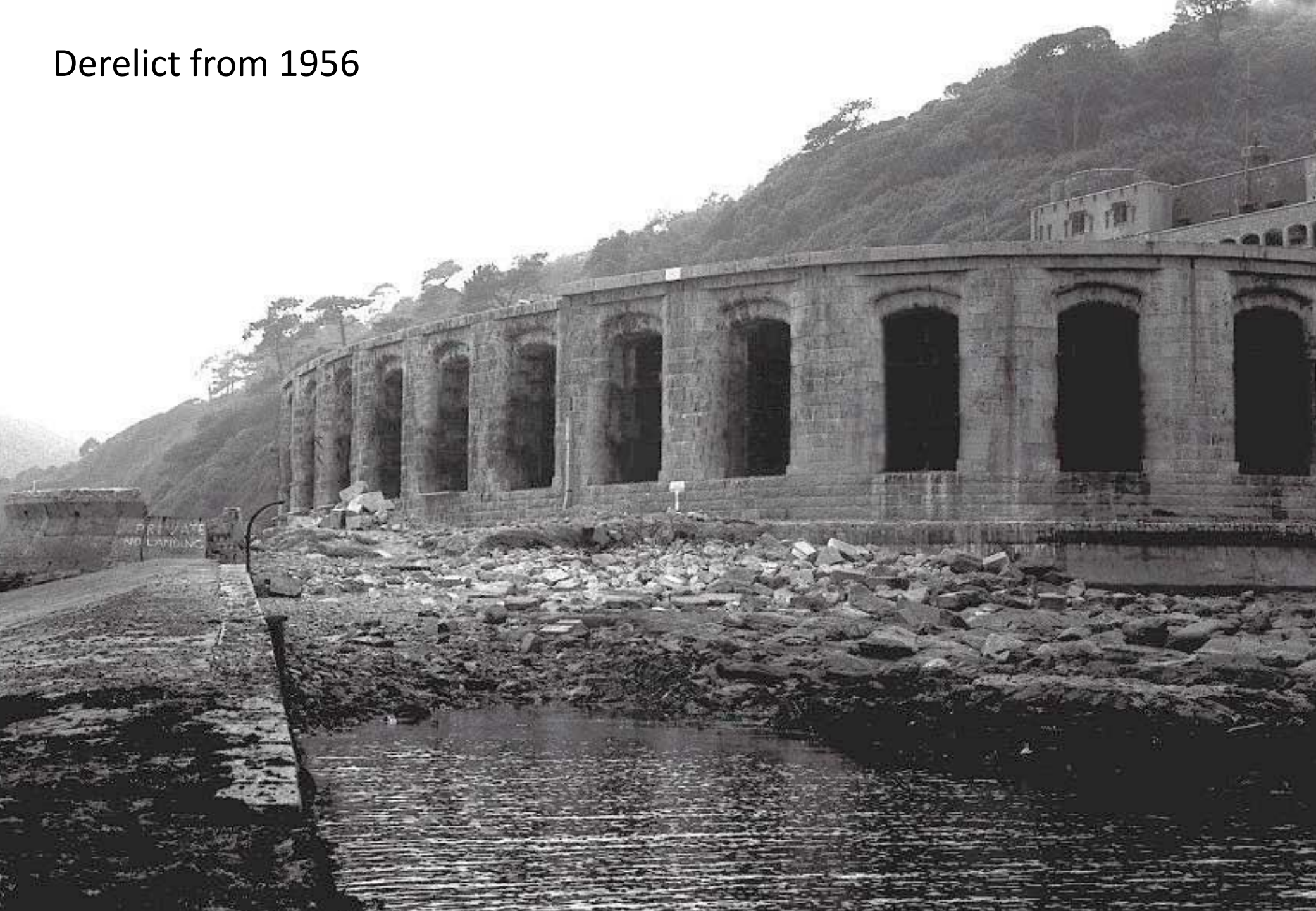


...and now!



Dennis Scoging

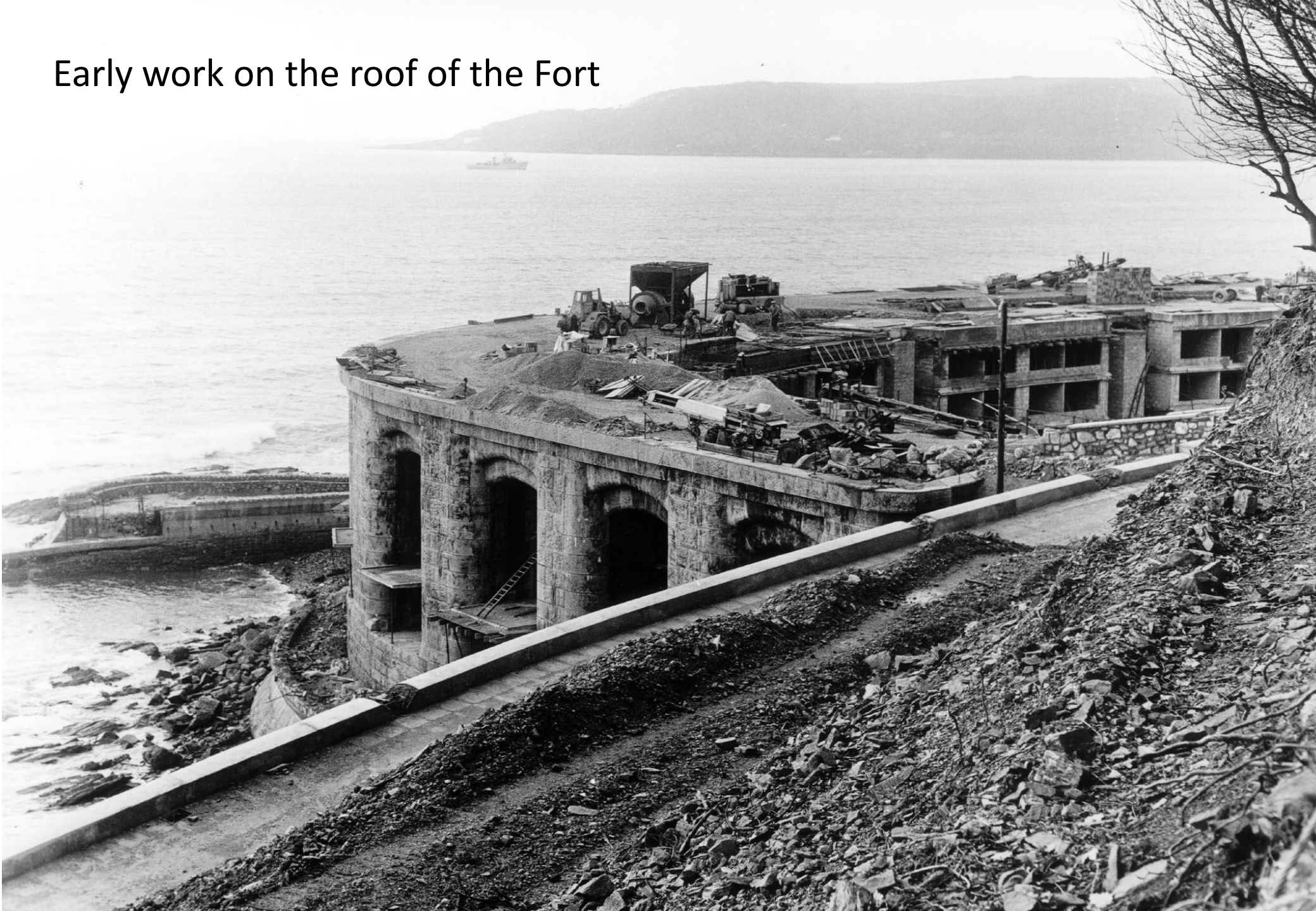
Derelict from 1956



First floor being erected



Early work on the roof of the Fort



View of the Sound from second floor



Artist impression 1975



Cawsand and Kingsand from the second floor



The original Plan





FLAT 15





Where were Health & Safety?



Built by three developers







Building is almost complete 1975





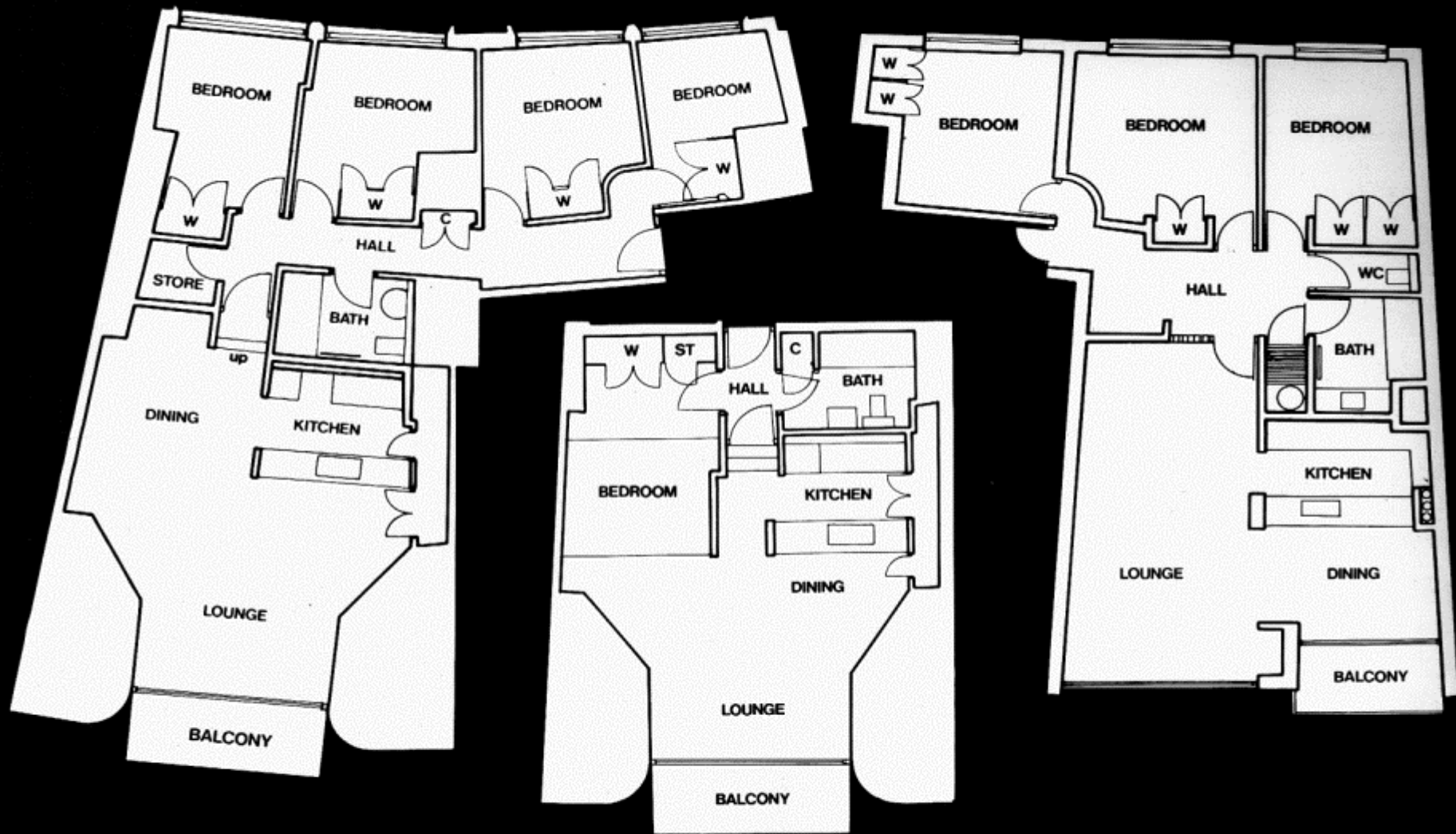
Where are they now???



# The garden today



# 1975 floor plans









1987



2011





Fort Picklecombe

Management

Company Ltd

December 1989









100-100

57



A small village???







DIY ROOM  
NO DRINKING  
SMOKING OR  
EATING IN THIS  
ROOM  
NO BOTTLES OF  
ANY KIND  
ALLOWED





















THANKS FOR LISTENING TO US BOTH TONIGHT